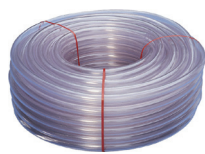


**Furtun / Hoses / Creva**

Furtun PVC / PVC hose  
PVC crevo



📖	Ø (mm)
R001201	4 / 6
R001202	5 / 8
R001203	6 / 9
...	...
R001241	60 / 70

Furtun PVC consolidate / PVC fabric-hose  
PVC crevo od tkanine



📖	Ø (mm)
R001101	6 / 12
R001102	8 / 14
R001103	9 / 15
...	...
R001116	50 / 64

Furtun PVC Torsino / Torsino PVC hose  
Torsino PVC crevo



📖	Ø
R001301	½ "
R001311	⅝ "
R001304	¾ "
...	...
R001310	2 "

Furtun silicon / Silicone hose  
Silikonsko crevo



📖	Ø (mm)
R001274	4 / 7
R001275	5 / 8
R001276	6 / 10
...	...
R001287	25 / 33

Furtun PU / PU hose  
PU crijevo



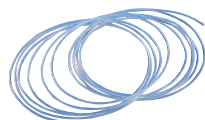
📖	Ø (mm)
R001290	4 / 6
R001291	5 / 8
R001292	6,5 / 10
...	...
R001294	11 / 16

Furtun oxigen / Oxygen hose  
Cijev za kisik



📖	Ø (mm)
R002302	6 / 13
R002303	6 / 16
R002304	9 / 16
-	-

Furtun PTFE-PFA / PTFE-PFA hose  
PTFE-PFA crijevo



📖	Ø (mm)
F005267	3 / 5
F005268	4 / 6
F005269	5 / 8
...	...
F005276	12 / 14

Furtun spiral Luisiana / Luisiana spiral hose  
Luisiana spiralno crijevo



📖	Ø (mm)
R001320	20 / 26,2
R001321	25 / 31,6
R001322	30 / 37,0
...	...
R001343	200 / 218,2

Furtun spiral Oregon / Oregon spiral hose  
Oregon spiralno crijevo



📖	Ø (mm)
R001360	20
R001361	25
R001362	30
...	...
R001386	300

Furtun spiral Arizona SE  
Arizona SE spiral hose  
Arizona SE spiralno crijevo



📖	Ø (mm)
R001421	25 / 33,8
R001422	32 / 40,8
R001423	38 / 46,8
...	...
R001444	200 / 226

Furtun spiral Shark  
Shark spiral hose  
Shark spiralno crijevo



📖	Ø (mm)
R001461	102 / 122
R001462	127 / 149
R001463	152 / 175
...	...
R001467	355 / 395

Furtun guma spiral de sarcina grea  
Heavy-duty rubber spiral hose  
Gumeno spiralno crijevo teške uvjete rada



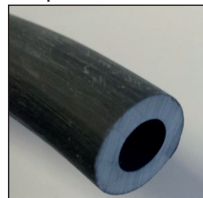
📖	Ø (mm)
R001521	19 / 29
R001522	25 / 35
R001523	32 / 42
...	...
R001541	202 / 227

Furtun spiral Vacupress Cristal & SE  
Vacupress cristal spiral hose & SE  
Vacupress Cristal spiralno crijevo & SE



📖	Ø (mm)
R001561	19 / 28,0
...	...
R001578	151 / 171
R001611	19 / 28,0
...	...
R001630	151 / 171

Furtun auto-submersibil Limpet  
Limpet self-sink hose  
Limpet samoumivaonik crijevo



📖	Ø (mm)
R001904	4
R001908	8
R001910	10
R001912	12
R001919	19

Furtun plat  
Flat hose  
Ravno crijevo



📖	Ø (mm)
R001500	25
R001501	32
R001502	40
...	...
R001508	207

**PA-POM fitinguri / PA - POM fittings / PA - POM okovi**

Dublu bavură / Double hose barb  
Dvostruka zarezana



📖	Ø (mm)
R030101	3
R030102	4
R030103	5
...	...
R030112	25

Dublu bav. red. / Double hose barb reduced  
Dvostruka zarezana smanjena



📖	Ø (mm)
R030201	4 × 3
R030202	6 × 4
R030203	8 × 4
...	...
R030208	12 × 10

Teu / T-piece  
T-komad



📖	Ø (mm)
R030301	3
R030302	4
R030303	5
...	...
R030314	25

Teu reductie / T-piece reduced  
T-komad smanjen

	Ø (mm)
R030401	3 × 4 × 3
R030402	4 × 6 × 4
R030403	6 × 4 × 6
...	...
R030416	18 × 15 × 18

Cot / Elbow  
Koljeno

	Ø (mm)
R030501	3
R030502	4
R030503	5
...	...
R030513	25

Y-fit. / Y-piece  
Y-komad

	Ø (mm)
R030601	3
R030602	4
R030603	5
...	...
R030612	19

Y-fit. reductie / Y-piece reduced  
Y-komad smanjen

	Ø (mm)
R030701	4 × 6 × 4
R030702	6 × 8 × 6
-	-

Cruce / Cross  
Krst

	Ø (mm)
R030801	4
R030802	5
R030803	6
R030804	12
-	-

Bavură × Filet ♂ / Hose barb × ♂ thread  
Zarezana × ♂ navoj

	Ø (mm)
R030901	4 × 1/8"
R030902	4 × 1/4"
R030903	5 × 1/4"
...	...
R030943	60 × 2"

Teu Bavură × Filet ♂  
T-piece Hose barb × ♂ thread  
T-komad zarezana × ♂ navoj

	Ø (mm)
R031001	4 × 1/8"
R031002	6 × 1/8"
R031003	6 × 1/4"
R031004	8 × 1/4"
R031005	10 × 3/8"

Cot Bavură × Filet ♂  
Elbow Hose barb × ♂ thread  
Lakat zarezana × ♂ navoj

	Ø (mm)
R031101	4 × 1/8"
R031102	4 × 1/4"
R031103	6 × 1/8"
...	...
R031115	25 × 1"

Bavură × Filet ♀  
Hose barb × ♀ thread  
Zarezana × ♀ navoj

	Ø (mm)
R031201	1/4" × 7
R031202	3/8" × 9
R031203	3/8" × 9
...	...
R0321219	2" × 50

Cot Bavură × Filet ♀  
Elbow Hose barb × ♀ thread  
Lakat zarezana × ♀ navoj

	Ø (mm)
R031301	1/2" × 12
R031302	3/4" × 12
R031303	3/4" × 12
...	...
R031311	2" × 60

Cot Filet ♂ × Filet ♂  
Elbow ♂ thread × ♂ thread  
Lakat ♂ navoj × ♂ navoj

	Ø
R031401	3/4"
R031402	1"
R031403	1" 1/4
-	-

Cot Bavură × Filet ♂  
Elbow Hose barb × ♂ thread  
Lakat zarezana × ♂ navoj

	Ø (mm)
R031501	3/8" × 12
R031502	1/2" × 12
R031503	1/2" × 16
...	...
R031511	1" 1/2 × 40

Uniune Bavură  
Union Hose barb  
Spoj zarezana

	Ø (mm)
R031601	13
R031602	16
R031603	20
...	...
R031609	60

Uniune Bavură × Filet ♂  
Union Hose barb × ♂ thread  
Spoj zarezana × ♂ navoj

	Ø (mm)
R031701	3/4" × 16
R031702	3/4" × 20
R031703	1" × 20
...	...
R031718	2" × 60

Capac filet ♂  
Cap ♂ thread  
Kapa ♂ navoj

	Ø
R031801	1/8"
R031802	1/4"
R031803	3/8"
...	...
R031806	1"

Capac filet ♀  
Cap ♀ thread  
Cap ♀ navoj

	Ø
R031901	1/2"
R031902	3/4"
R031903	1"
-	-

Niplu Filet ♂ × Filet ♂  
Nipple ♂ thread × ♂ thread  
Bradavica ♂ navoj × ♂ navoj

	Ø
R032001	3/8"
R032002	1/2"
R032003	3/4"
...	...
R032007	2"

Niplu reductie Filet ♂ × Filet ♂  
Reduced nipple ♂ thread × ♂ thread  
Bradavica smanjena ♂ navoj × ♂ navoj

	Ø (mm)
R032101	1/2" × 3/8"
R032102	3/4" × 1/2"
R032103	1" × 3/4"
...	...
R032107	2" × 1" 1/2

de asemenea, disponibile : fittinguri Super Speedfit / also available : Super Speedfit fittings / također dostupno: Super Speedfit priključci

**Racorduri rapide pentru aer comprimat / Compressed air quick-couplings**  
**Empalmes de conexión rapida para aire comprimido**

Baza bavură / Hose barb base  
Baza zarezana



📖	Ø (mm)
R003401	6
R003402	8
R003403	9
R003404	10
R003405	13

Baza Filet ♀ / ♀ thread base  
Baza ♀ navoj



📖	Ø
R003501	¼"
R003502	⅜"
R003503	½"
-	-

Baza Filet ♂ / ♂ thread base  
Baza ♂ navoj



📖	Ø
R003601	¼"
R003602	⅜"
R003603	½"
-	-

Duză Bavură / Hose barb nozzle  
Bradavica zarezana



📖	Ø (mm)
R003901	6
R003902	8
R003903	9
R003904	10
R003905	13

Duză Filet ♀ / ♀ thread nipple  
Bradavica ♀ navoj



📖	Ø
R004101	¼"
R004102	⅜"
R004103	½"
-	-

Duză Filet ♂ / ♂ thread nipple  
Bradavica ♂ navoj



📖	Ø
R004001	¼"
R004002	⅜"
R004003	½"
-	-

**LOK fittinguri / LOK fittings / LOK okovi**

Uniune / Union  
Spoj



📖	Ø (mm)
R032201	2
R032202	3
R032203	4
...	...
R032219	50

Uniune reductie / Reducing union  
Smanjenje spoj



📖	Ø (mm)
R032301	3 × 2
R032302	6 × 2
R032303	6 × 3
...	...
R032324	38 × 30

Uniune pèrete despartitor / Bulkhead union  
Pregradni spoj



📖	Ø (mm)
R032401	3
R032402	4
R032403	6
...	...
R032415	38

Uniune pèrete despartitor reductie  
Bulkhead reducing union  
Spoj pregrade



📖	Ø (mm)
R032501	6 × ⅛"
-	-

Conexiune ♂  
♂ connector  
♂ konektor



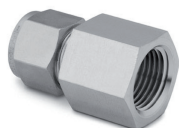
📖	Ø (mm)
R032601	2 × ⅛"
R032602	3 × ⅛"
R032603	3 × ¼"
...	...
R032644	38 × 1" ½

Conexiune pèrete despartitor ♂  
Bulkhead ♂ connector  
Pregrada ♂ konektor



📖	Ø (mm)
R032701	6 × ⅛"
R032702	6 × ¼"
R032703	12 × ½"
-	-

Conexiune ♀  
♀ connector  
♀ konektor



📖	Ø (mm)
R032801	3 × ⅛"
R032802	3 × ¼"
R032803	4 × ⅛"
...	...
R032825	25 × 1"

Conexiune pèrete despartitor ♀  
Bulkhead ♀ connector  
Pregrada ♀ konektor



📖	Ø (mm)
R032901	6 × ¼"
R032902	12 × ½"
-	-

Capac  
Cap  
Kapa



📖	Ø (mm)
R033001	2
R033002	3
R033003	4
...	...
R033018	38

Cot union / Union elbow  
Lakat spoj



📖	Ø (mm)
R033101	3
R033102	4
R033103	6
...	...
R033118	50

Cot ♂ / ♂ elbow  
Lakat ♂



📖	Ø (mm)
R033201	3 × ⅛"
R033202	3 × ¼"
R033203	4 × ⅛"
...	...
R033235	38 × 1" ½

Cot ♀ / ♀ elbow  
Lakat ♀



📖	Ø (mm)
R033301	6 × ⅛"
R033302	6 × ¼"
R033303	6 × ½"
...	...
R033309	16 × ½"

Cot  $\sigma$  45° / 45°  $\sigma$  elbow  
Lakat  $\sigma$  45°



📖	Ø (imp.)
R033401	1/4" x 1/8"
R033402	1/4" x 1/4"
R033403	3/8" x 1/8"
...	...
R0334	1" x 1"

Teu uniune / Union Tee  
T-komad spoj



📖	Ø (mm)
R033501	2
R033502	3
R033503	4
...	...
R033519	50

Teu uniune reductie / Reducing union Tee  
T-komad spoj smanjena



📖	Ø (mm)
R033601	3 x 6
R033602	8 x 6
R033603	10 x 6
...	...
R033609	25 x 15

Teu ramură  $\sigma$  /  $\sigma$  branch Tee  
T-komad grana  $\sigma$



📖	Ø (mm)
R033701	6 x 1/8"
R033702	6 x 1/4"
R033703	8 x 1/8"
...	...
R033709	16 x 1/2"

Teu racord  $\sigma$  /  $\sigma$  run Tee  
T-komad prolaz  $\sigma$



📖	Ø (mm)
R033801	6 x 1/8"
R033802	6 x 1/4"
R033803	8 x 1/4"
...	...
R033806	16 x 1/2"

Teu racord  $\varnothing$  /  $\varnothing$  run Tee  
T-komad prolaz  $\varnothing$



📖	Ø (mm)
R033901	6 x 1/8"
R033902	6 x 1/4"
R033903	8 x 1/8"
...	...
R033909	16 x 1/2"

Teu  $\varnothing$  à ramură /  $\varnothing$  branch Tee  
T-komad grana  $\varnothing$



📖	Ø (mm)
R034001	6 x 1/8"
R034002	6 x 1/4"
R034003	8 x 1/8"
...	...
R034009	16 x 1/2"

Cruce uniune / Union cross  
Krst spoj



📖	Ø (mm)
R034101	3
R034102	6
R034103	8
...	...
R034110	25

Insertie furtun / Tubing insert  
Umetak cijevi



📖	Ø (mm)
R034201	6 x 4
R034202	8 x 6
R034203	10 x 8
R034204	12 x 8
R034205	12 x 10

Conexiune furtun  
Hose connector  
Konektor za crevo



📖	Ø (imp.)
R034301	1/8" x 1/8"
R034302	1/4" x 1/8"
R034303	1/4" x 1/4"
...	...
R034306	1/2" x 1/2"

Conexiune furtun  $\sigma$   
 $\sigma$  hose connector  
Konektor za crevo  $\sigma$



📖	Ø (mm)
R034401	4 x 1/8"
R034402	6 x 1/8"
R034403	8 x 1/8"
...	...
R034433	50 x 2"

Conexiune furtun  $\varnothing$   
 $\varnothing$  hose connector  
Konektor za crevo  $\varnothing$



📖	Ø (mm)
R034501	6 x 1/8"
R034502	9 x 1/8"
R034503	6 x 1/4"
...	...
R034520	38 x 2"

Conexiune furtun  $\varnothing$  cu piulita  
Hose connector, with  $\varnothing$  nut  
Konektor za crevo sa maticom



📖	Ø (mm)
R034601	4 x 1/8"
R034602	6 x 1/8"
R034603	4 x 1/4"
...	...
R034615	25 x 1"

Bavură, dublu  
Hose nozzle, double  
Konektor za crevo, duplo



📖	Ø (mm)
R034701	6
R034702	9
R034703	13
...	...
R034716	107

Niplu scurt  $\sigma$   
Close  $\sigma$  nipple  
Kratka bradavica  $\sigma$



📖	Ø
R034801	1/8"
R034802	1/4"
R034803	3/8"
...	...
R034806	1"

Niplu  $\sigma$  hexagonal  
Hex  $\sigma$  nipple  
Heksagonalna bradavica  $\sigma$



📖	Ø
R034901	1/16"
R034902	1/8"
R034903	1/4"
...	...
R034909	2"

Niplu  $\sigma$  hexagonal, mix  
Hex  $\sigma$  nipple, mixed  
Heksagonalna bradavica  $\sigma$ , mješovito



📖	Ø
R035001	1/8"
R035002	1/4"
R035003	3/8"
...	...
R035006	1"

Niplu  $\sigma$  reductie hexagonal  
Hex reducing  $\sigma$  nipple  
Heksagonalna bradavica  $\sigma$ , smanjena



📖	Ø
R035101	1/8" x 1/16"
R035102	1/4" x 1/8"
R035103	3/8" x 1/8"
...	...
R035112	1" x 3/4"



Adaptor ♀ × ♂  
Adapter ♀ × ♂  
Adapter ♀ × ♂



📖	Ø (mm)
R035201	1/8"
R035202	1/4"
R035203	3/8"
...	...
R035206	1"

Adaptor ♀ × ♂, mix  
Adapter ♀ × ♂, mixed  
Adapter ♀ × ♂, mješovito



📖	Ø (mm)
R035301	1/8"
R035302	1/4"
R035303	3/8"
...	...
R035306	1"

Adaptor ♂ × ♀, mix  
Adapter ♂ × ♀, mixed  
Adapter ♂ × ♀, mješovito



📖	Ø (mm)
R035401	1/4"
R035402	3/8"
R035403	1/2"
-	-

Adaptor reductie ♀ × ♂  
Reducing adapter ♀ × ♂  
Adapter ♀ × ♂, smanjena



📖	Ø (mm)
R035501	1/8" × 1/16"
R035502	1/4" × 1/8"
R035503	3/8" × 1/8"
...	...
R035513	1" × 3/4"

Manşon reductie ♂ × ♀  
Reducing bushing ♂ × ♀  
Muff smanjena ♂ × ♀



📖	Ø (mm)
R035601	1/8" × 1/16"
R035602	1/4" × 1/8"
R035603	3/8" × 1/8"
...	...
R035614	1" × 3/4"

Cuplare ♀ hexagonal  
♀ hex coupling  
Heksagonalna spojnica ♀



📖	Ø (mm)
R035701	1/8"
R035702	1/4"
R035703	3/8"
...	...
R035706	1"

Cuplare ♀ hexagonal reductie  
♀ hex reducing coupling  
Heksagonalna spojnica ♀, smanjena



📖	Ø (mm)
R035801	1/4" × 1/8"
R035802	3/8" × 1/4"
R035803	1/2" × 1/8"
...	...
R035809	1" × 3/4"

Cot ♀ × ♀  
♀ × ♀ elbow  
Lakat ♀ × ♀



📖	Ø (mm)
R035901	1/8"
R035902	1/4"
R035903	3/8"
...	...
R035906	1"

Cot ♂ × ♂  
♂ × ♂ elbow  
Lakat ♂ × ♂



📖	Ø (mm)
R036001	1/8"
R036002	1/4"
R036003	3/8"
...	...
R036006	1"

Cot ♀ × ♂  
♀ × ♂ elbow  
Lakat ♀ × ♂



📖	Ø (mm)
R036101	1/8"
R036102	1/4"
R036103	3/8"
...	...
R036106	1"

Cot ♀ × ♂ reductie  
♀ × ♂ reducing street elbow  
Lakat ♀ × ♂, smanjena



📖	Ø (mm)
R036201	1/8"
R036202	1/4"
R036203	3/8"
...	...
R036206	1"

Teu ♀  
♀ Tee  
T-komad ♀



📖	Ø (mm)
R036301	1/8"
R036302	1/4"
R036303	3/8"
...	...
R036306	1"

Teu ♂  
♂ Tee  
T-komad ♂



📖	Ø (mm)
R036401	1/8"
R036402	1/4"
R036403	3/8"
...	...
R036306	1"

Teu ramură ♀ × ♀ × ♂  
♀ × ♀ × ♂ branch Tee  
T-komad grana ♀ × ♀ × ♂



📖	Ø (mm)
R036501	1/8"
R036502	1/4"
R036503	3/8"
R036504	1/2"
-	-

Teu ramură ♀ × ♂ × ♀  
♀ × ♂ × ♀ street Tee  
T-komad grana ♀ × ♂ × ♀



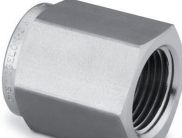
📖	Ø (mm)
R036601	1/8"
R036602	1/4"
R036603	3/8"
R036604	1/2"
R036605	3/4"

Cruce ♀ / ♀ cross  
Krst ♀



📖	Ø (mm)
R036701	1/8"
R036702	1/4"
R036703	3/8"
...	...
R036706	1"

Capac ♀ / ♀ cap  
Kapa ♀



📖	Ø (mm)
R036801	1/8"
R036802	1/4"
R036803	3/8"
...	...
R036806	1"

Capac ♂ / ♂ plug  
Kapa ♂



📖	Ø (mm)
R036901	1/8"
R036902	1/4"
R036903	3/8"
...	...
R036906	1"

### Cuple simetrice tip Guillemin / Guillemin symmetric couplings / Guillemin simetrične spojnice

Bavură / Hose barb  
Zarezana



📖	Ø (mm)
R900501	30
R900502	35
R900503	40
...	...
R900511	110

Racord ♀ / ♀ coupling  
♀ spojnica



📖	Ø
R900301	1"
R900302	1" ¼
R900303	1" ½
...	...
R900307	4"

♀ cu blocare / ♀ with lock  
♀ sa bravom



📖	Ø
R900401	1"
R900402	1" ¼
R900403	1" ½
...	...
R900407	4"

Racord ♂ / ♂ coupling  
♂ spojnica



📖	Ø
R900101	1"
R900102	1" ¼
R900103	1" ½
...	...
R900107	4"

♂ cu blocare / ♂ with lock  
♂ sa bravom



📖	Ø
R900201	1"
R900202	1" ¼
R900203	1" ½
...	...
R900207	4"

Capac / Lid  
Poklopac



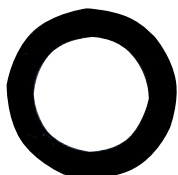
📖	DN
R900601	25
R900602	32
R900603	40
...	...
R900607	100

Racord dublu / Double coupling  
Dvostruka spojnica



📖	DN
R900901	40/25
R900902	40/32
R900903	50/32
...	...
R900912	100/80

Garnitura / Seal  
Pečat



📖	DN
R900701	25
R900702	32
R900703	40
...	...
R900707	100

Cheie de piulițe / Wrench spanner  
Ključ



📖	DN
R900801	25 ... 65
R900802	55 ... 110
-	-

### Cuple Storz / Storz couplings / Storz spojnice

Bavură / Hose barb  
Zarezana



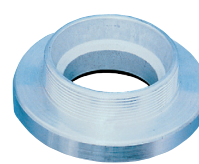
📖	Ø (mm)
R002402	C/52 × 25
R002403	C/52 × 32
R002404	C/52 × 38
...	...
R002407	B/75 × 75

Racord ♀ / ♀ coupling  
♀ spojnica



📖	Ø (mm)
R002501	D/25 × 1"
R002502	C/52 × 1"
R002503	C/52 × 1" ¼
...	...
R002507	B/75 × 3"

Racord ♂ / ♂ coupling  
♂ spojnica



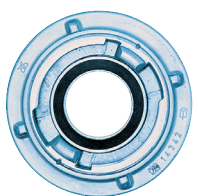
📖	Ø (mm)
R002602	C/52 × 1"
R002603	C/52 × 1" ¼
R002604	C/52 × 1" ½
R002605	C/52 × 2"
-	-

Capac / Lid  
Poklopac



📖	Ø (mm)
R002702	C/52
R002703	B/75
-	-

Reductie / Reducer  
Redukcija



📖	Ø (mm)
R002801	C × Geka
R002802	C × D
R002803	B × C
R002804	A × B
-	-

Cheie de piulițe / Wrench spanner  
Ključ



📖	Ø (mm)
R002902	A/B/C
-	-

### Cuple Kardan - Perrot / Kardan - Perrot couplings / Kardan - Perrot spojnice

Bavură ♂ / Hose barb ♂  
♂ zarezana



📖	Ø (mm)
R003001	50
R003003	70
R003004	90
...	...
R003009	150

Bavură ♀ / Hose barb ♀  
♀ zarezana



📖	Ø (mm)
R003101	50
R003103	70
R003104	90
...	...
R003109	150

Filet ♂ / Thread ♂  
♂ navoj



📖	Ø (mm)
R003201	1" ½
R003202	2" -50
R003203	2" -70
...	...
R003210	6"

Filet ♀ / Thread ♀  
♀ navoj



📖	Ø (mm)
R003301	1" ½
R003302	2" -50
R003303	2" -70
...	...
R003310	6"

Flanșă ♂ / Flange ♂  
♂ prirubnica



📖	DN
R003331	50
R003332	65
R003333	80
...	...
R003336	150

Flanșă ♀ / Flange ♀  
♀ prirubnica



📖	DN
R003361	50
R003362	65
R003363	80
...	...
R003366	150

### Cuple Camlock / Camlock couplings / Camlock spojnice

Racord C / C coupling  
C spojnica



📖	Ø (mm)
R901001	¾" x 19
R901002	1" x 25
R901003	1" ¼ x 32
...	...
R901008	4" x 100

Racord E / E coupling  
E spojnica



📖	Ø (mm)
R901011	¾" x 19
R901012	1" x 25
R901013	1" ¼ x 32
...	...
R901018	4" x 100

Racord D / D coupling  
D spojnica



📖	Ø (mm)
R901021	¾"
R901022	1"
R901023	1" ¼
...	...
R901028	4"

Racord A / A coupling  
A spojnica



📖	Ø (mm)
R901031	¾"
R901032	1"
R901033	1" ¼
...	...
R901038	4"

Racord B / B coupling  
B spojnica



📖	Ø (mm)
R901041	¾"
R901042	1"
R901043	1" ¼
...	...
R901048	4"

Racord F / F coupling  
F spojnica



📖	Ø (mm)
R901051	¾"
R901052	1"
R901053	1" ¼
...	...
R901058	4"

De asemenea, disponibile: PP material, capace, O-inele... / Also available: PP material, caps, O-rings, ... / Takođe dostupno: PP materijal, kapice, O-prstenovi,...

### Compensatoare dilatate / Compensators / Kompenzatori ekspanzije

Racord ♀ / ♀ coupling  
♀ spojnica



📖	Ø (mm)
R040101	¾"
R040102	1"
R040103	1" ¼
...	...
R040107	3"

Flanșă oțel galv. / Flange galv. steel  
Prirubnica pocinčana čelika



📖	DN
R040201	32
R040202	40
R040203	50
...	...
R040211	300

Flanșă oțel inox. / Flange stainless steel  
Prirubnica nerđajuća čelika



📖	DN
R040301	32
R040302	40
R040303	50
...	...
R040311	300

Manșon 0,6 bar / Socket 0,6 bar  
Muff 0,6 bar



📖	Ø (mm)
R040401	24/32
R040402	32/40
R040403	42/50
...	...
R040412	150/165

Manșon 2,5 bar / Socket 2,5 bar  
Muff 2,5 bar



📖	Ø (mm)
R040501	55/65
R040502	65/75
R040503	75/89
...	...
R040510	150/175

Reductie 0,6 bar / Reduction 0,6 bar  
Redukcija 0,6 bar



📖	Ø (mm)
R040601	32/40x24/32
R040602	40/50x24/32
R040603	40/50x32/40
R040604	53/63x32/40
...	...

### Cleme strângere / Clamps / Obujmice za crijeva

Snec / Worm drive  
Cog ogrlica



📖	Ø (mm)
R005000	8-16
R005001	10-22
R005002	14-27
...	...
R005014	165-216

Urechi / Ears  
Uši



📖	Ø (mm)
R041101	1x 8,1/9,5
...	...
R041001	1x 7,5/9
...	...
R005103	2x 7-9
...	...

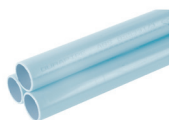
Trunnion & Cablu dublu / Gudgeon & Wire  
Klip & Dvostruka žica



📖	Ø (mm)
R041201	26/28
...	...
R041230	240/252
R041301	22/25
...	...
R041334	437/450

### Tubulatura oxigen Air-Line Xtra / Air-Line Xtra oxygen piping / Air-Line Xtra cijevi za kisik

Conductă / Pipe  
Cijev



📖	Ø (mm)
R041601	16
R041602	20
R041603	25
...	...
R041610	110

Manșon / Socket  
Muff



📖	Ø (mm)
R041701	16
R041702	20
R041703	25
...	...
R041710	110

Reductie scurt / Reduced, short  
Redukcija, kratko



📖	Ø (mm)
R041851	20 × 16
R041802	25 × 20
R041803	32 × 16
...	...
R041868	110 × 90

Reductie lung / Reduction, long  
Redukcija, dugo



📖	Ø (mm)
R041801	16 × 20/25
R041802	20 × 25/32
R041803	25 × 32/40
...	...
R041808	75 × 90/110

Cot 90° / Elbow 90°  
Lakt 90°



📖	Ø (mm)
R042401	16
R042402	20
R042403	25
...	...
R042410	110

Cot 45° / Elbow 45°  
Lakt 45°



📖	Ø (mm)
R042451	16
R042402	20
R042403	25
...	...
R042460	110

Teu / Tee  
T-komad



📖	Ø (mm)
R042101	16
R042102	20
R042103	25
...	...
R042110	110

Teu reductie / Reduced tee  
T-komad, redukovana



📖	Ø (mm)
R042201	20 × 16
R042222	25 × 16
R042203	25 × 20
...	...
R042215	63 × 50

Uniune / Union  
Spoj



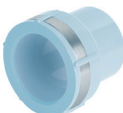
📖	Ø (mm)
R042801	16
R042802	20
R042803	25
...	...
R042807	63

Manșon × ♀ / Socket × ♀  
Muff × ♀



📖	Ø (mm)
R041951	20 × ½"
R041952	25 × ¾"
R041953	32 × 1"
-	-

Manșon × ♀ / Socket × ♀  
Muff × ♀



📖	Ø (mm)
R041901	16/12 × ½"
R041902	20/16 × ½"
R041903	25/20 × ¾"
...	...
R041907	63/50 × 2"

Capac / Cap  
Kapa



📖	Ø (mm)
R042901	16
R042902	20
R042903	25
...	...
R042907	63

🔧 Lipici ABS și cleme Cobra pagina 147 / ABS solvent cement & Cobra clips page 147 / ABS ljeplilo & Cobra kopče strana 147

### HDPE tubulatura & Fitinguri de compresie/ HDPE pipe & Compression fittings / HDPE cijevi i kompresioni fitinzi

Tube / Pipe  
Cijev



📖	Ø (mm)
R005398	16
R005399	20
R005400	25
...	...
R005426	1000

Manșon / Socket  
Muff



📖	Ø (mm)
R043201	16
R043202	20
R043203	25
...	...
R043210	110

Manșon reductie / Reduced socket  
Muff, redukovana



📖	Ø (mm)
R043301	20 × 16
R043302	25 × 16
R043303	25 × 20
...	...
R043320	110 × 90

Adaptator ♂ / ♂ adapter  
♂ adapter



📖	Ø (mm)
R043401	16 × ¾"
R043402	16 × ½"
R043403	16 × ¾"
...	...
R043435	110 × 4"

Adaptator ♀ / ♀ adapter  
♀ adapter



📖	Ø (mm)
R043501	16 × ¾"
R043502	16 × ½"
R043503	16 × ¾"
...	...
R043531	110 × 4"

Cot 45° / Elbow 45°  
Lakt 45°



📖	Ø (mm)
R043601	40
R043602	50
R043603	63
R043604	90
R043605	110



Cot 90° / Elbow 90° / Lakt 90°



📖	Ø (mm)
R043701	16
R043702	20
R043703	25
...	...
R043710	110

Cot 90° ♀ / ♀ elbow 90° / ♀ lakt 90°



📖	Ø (mm)
R043801	16 × 3/8"
R043802	16 × 1/2"
R043803	20 × 1/2"
...	...
R043825	110 × 4"

Cot 90° ♂ / ♂ elbow 90° / ♂ lakt 90°



📖	Ø (mm)
R043901	16 × 3/8"
R043902	16 × 1/2"
R043903	20 × 1/2"
...	...
R043924	110 × 4"

Teu / Tee / T-komad



📖	Ø (mm)
R044001	16
R044002	20
R044003	25
...	...
R044010	110

Teu ♀ / ♀ Tee / ♀ T-komad



📖	Ø (mm)
R044101	16 × 3/8"
R044102	16 × 1/2"
R044103	16 × 3/4"
...	...
R044133	110 × 4"

Teu ♂ / ♂ Tee / ♂ T-komad



📖	Ø (mm)
R044201	16 × 3/8"
R044202	16 × 1/2"
R044203	16 × 3/4"
...	...
R044227	90 × 4"

Capac / Cap  
Kapa



📖	Ø (mm)
R044301	16
R044302	20
R044303	25
...	...
R044310	110

Șurub șa / Bolt saddle  
Sedlo



📖	Ø (mm)
R044401	20 × 1/2"
R044402	25 × 1/2"
R044403	25 × 3/4"
...	...
R044490	315 × 4"

Garnitură / Seal  
Pečat



📖	Ø (mm)
R044501	16
R044502	20
R044503	25
...	...
R044510	110

**PE fittinguri prin electrofuziune / Electrofusion PE fittings / Elektrofuzioni PE fitinzi**

☞ p. 146

Cuplă / Coupler  
Spojnika



📖	Ø (mm)
R046101	16
R046102	20
R046103	25
...	...
R046126	710

Cuplă reductie / Reduced coupler  
Redukovana spojnika



📖	Ø (mm)
R046201	20 × 16
R046202	25 × 20
R046203	32 × 20
...	...
R046224	180 × 25

Mufă reductie / Reduced spigot  
Redukovana priključak



📖	Ø (mm)
R046301	32 × 25
R046302	40 × 32
R046303	50 × 40
...	...
R046330	200 × 180

Capac monolitic / Monolithic cap  
Monolitna kapa



📖	Ø (mm)
R046401	32
R046402	40
R046403	50
R046404	63
-	-

Capac / End cap  
Kapa



📖	Ø (mm)
R046501	20
R046502	25
R046503	32
...	...
R046518	315

Mufă capat / Spigot end plug  
Završni čep



📖	Ø (mm)
R046601	20
R046602	25
R046603	32
...	...
R046618	315

Teu / Tee  
T-komad



📖	Ø (mm)
R046701	20
R046702	25
R046703	32
...	...
R046715	250

Teu reductie / Reduced Tee  
T-komad, redukovana



📖	Ø (mm)
R046801	25 × 20
R046802	25 × 32
R046803	32 × 20
...	...
R046835	250 × 110

Te cu flanșă / Flanged Tee  
T-komad, prirubnica



📖	Ø (mm × DN)
R046901	90 × 80
R046902	110 × 80
R046903	110 × 100
...	...
R046915	250 × 100

Cot 90° / Elbow 90° / Lakt 90°



📖	Ø (mm)
R047001	20
R047002	25
R047003	32
...	...
R047016	250

Cot 45° / Elbow 45° / Lakt 45°



📖	Ø (mm)
R047101	32
R047102	40
R047103	50
...	...
R047114	250

Cot 22° / Elbow 22° / Lakt 22°



📖	Ø (mm)
R047201	90
R047202	110
R047203	125
R047204	160
R047205	180

Cot 360°  
Elbow 360°  
Lakt 360°



📖	Ø (mm)
R047301	25
R047302	32
R047303	40
-	-

Reductie Y  
Y reductor  
T-komad, redukovana



📖	Ø (mm)
R047401	32 × 25
R047402	40 × 32
R047403	50 × 40
-	-

Cot 90° c°cu talpa (cu priză)  
Duckfoot elbow 90° (with outlet)  
Lakt pačje noge 90° (sa izlazom)



📖	Ø (mm)
R047501	90
R047502	90 × 32
-	-

Cot reglabil  
Adjustable elbow  
Podesivi lakat



📖	Ø (mm)
R047601	110
R047602	125
R047603	160
R047604	180
-	-

Cot reglabi, o singură față  
Adjustable elbow, one sided  
Podesivi lakat, jednostran



📖	Ø (mm)
R047701	110
R047702	125
R047703	160
R047704	180
-	-

Șa de tranziție  
Transition saddle  
Prijelazno sedlo



📖	Ø (mm)
R047801	63 × 1" ¼
R047802	75 × 1" ¼
R047803	90 × 1" ½
...	...
R047817	250 × 2"

Reparare șa / Repair saddle  
Popravak sedla



📖	Ø (mm)
R047901	63
R047902	75
R047903	90
...	...
R047908	180

Ramură șa / Branch saddle  
Sedlo sa granom



📖	Ø (mm)
R048001	63 × 32
R048002	63 × 40
R048003	63 × 50
...	...
R048046	315 × 90

Transvazare șa / Tapping saddle  
Sedlo, namet



📖	Ø (mm)
R048101	40 × 20
R048102	40 × 32
R048103	50 × 20
...	...
R048161	250 × 63

Capac de sudare pentru bandajarea șa  
Welding cap for taping saddle  
Kapa za sedlo, namet



📖	Ø (mm)
R048201	57
R048202	50
R048203	40
-	-

Robinet cu bila  
Ball valve  
Kuglasti ventil



📖	Ø (mm)
R048301	25
R048302	32
R048303	40
...	...
R048309	125

Supapă de transvazare  
Tapping valve  
Ventil, namet



📖	Ø (mm)
R048401	63 × 32
R048402	63 × 40
R048403	63 × 50
...	...
R048444	250 × 63

Cuplu de tranziție ♂  
♂ transition coupler  
♂ prelazna spojnica



📖	Ø (mm)
R048501	20 × ½"
R048502	25 × ¾"
R048503	32 × 1"
...	...
R048509	63 × 2"

Cot 90° de tranziție ♂  
♂ transition elbow 90°  
♂ prelazno koleno 90°



📖	Ø (mm)
R048601	20 × ½"
R048602	25 × ¾"
R048603	32 × 1"
...	...
R048609	63 × 2"

Cot 45° de tranziție ♂  
♂ transition elbow 45°  
♂ prelazno koleno 45°



📖	Ø (mm)
R048701	32 × 1"
R048702	40 × 1"
R048703	32 × 1" ¼
...	...
R048707	63 × 2"

Cuplu de tranziție cu flanșă din fonta  
Cast iron flange transition coupler  
Spojnică od lijevanog željeza



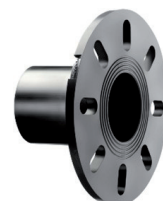
📖	Ø (mm × DN)
R048801	63 × 50
R048802	90 × 80
R048803	110 × 100
...	...
R048807	225 × 200

Cuplu de tranziție mufă din fonta  
Cast iron spigot transition coupler  
Prijelazna spojnică od lijevanog željeza



📖	Ø (mm × DN)
R048901	90 × 80
R048902	110 × 100
R048903	125 × 100
...	...
R048906	225 × 200

Flanșă fata complet  
Full face flange  
Prirubnică pune površine



📖	Ø (mm)
R049001	90
-	-

Guler cu flanșă / Flange adaptor  
Prirubnički adapter



📖	Ø (mm)
R049101	20
R049102	25
R049103	32
...	...
R049120	400

Flanșă / Flange backing ring  
Prsten za prirubnicu



📖	Ø (mm)
R049201	20 × ½"
R049202	25 × ¾"
R049203	32 × 1"
...	...
R049223	355 × 14"

Garnitură / Seal  
Pečat

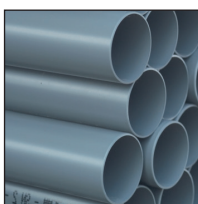


📖	Ø (mm)
R049301	20
R049302	25
R049303	32
...	...
R049316	400

☞ masini si accesorii la pagina 146 / machines & accessories page 146 / mašine i pribor strana 146

**Țevi din PVC de drenaj / Drainage PVC pipe / Odvodna PVC cijev**

SN2 (SDR 51) NF-E



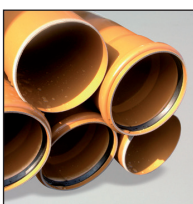
📖	Ø (mm)
R005461	32
R005462	40
R005463	50
...	...
R005475	315

SN4 (SDR 41)



📖	Ø (mm)
R005481	110
R005482	125
R005483	160
...	...
R005410	800

KGEM



📖	Ø (mm)
R005501	110
R005502	125
R005503	160
...	...
R005508	500

**Fitinguri din PVC pentru drenaj / Drainage PVC fittings / Odvodni PVC elementi**

Cot 20° ♂ × ♀ / Elbow 20° ♂ × ♀  
Lakt 20° ♂ × ♀



📖	Ø (mm)
R050101	32
R050102	40
R050103	50
...	...
R050112	160

Cot 20° ♀ × ♀ / Elbow 20° ♀ × ♀  
Lakt 20° ♀ × ♀



📖	Ø (mm)
R050201	32
R050202	40
R050203	50
...	...
R050212	160

Cot 30° ♂ × ♀ / Elbow 30° ♂ × ♀  
Lakt 30° ♂ × ♀



📖	Ø (mm)
R050301	32
R050302	40
R050303	50
...	...
R050312	160

Cot 30° ♀ × ♀ / Elbow 30° ♀ × ♀  
Lakt 30° ♀ × ♀



📖	Ø (mm)
R050401	32
R050402	40
R050403	50
...	...
R050412	160

Cot 45° ♂ × ♀ / Elbow 45° ♂ × ♀  
Lakt 45° ♂ × ♀



📖	Ø (mm)
R050501	32
R050502	40
R050503	50
...	...
R050515	315

Cot 45° ♀ × ♀ / Elbow 45° ♀ × ♀  
Lakt 45° ♀ × ♀



📖	Ø (mm)
R050601	32
R050602	40
R050603	50
...	...
R050615	315

Cot 45° à joint / Elbow 45° with seal  
Lakt 45° sa pečatom



📖	Ø (mm)
R050704	63
R050705	75
R050706	80
...	...
R050715	315

Cot 67° ♂ × ♀ / Elbow 67° ♂ × ♀  
Lakt 67° ♂ × ♀



📖	Ø (mm)
R050801	32
R050802	40
R050803	50
...	...
R050813	200

Cot 67° ♀ × ♀ / Elbow 67° ♀ × ♀  
Lakt 67° ♀ × ♀



📖	Ø (mm)
R050901	32
R050902	40
R050903	50
...	...
R050913	200

Cot 67° à joint / Elbow 67° with seal  
Lakt 67° sa pečatom



📖	Ø (mm)
R051004	63
R051005	75
R051006	80
...	...
R051013	200

Cot 87° ♂ × ♀ / Elbow 87° ♂ × ♀  
Lakt 87° ♂ × ♀



📖	Ø (mm)
R051101	32
R051102	40
R051103	50
...	...
R051115	315

Cot 87° ♂ × ♀ / Elbow 87° ♂ × ♀  
Lakt 87° ♂ × ♀



📖	Ø (mm)
R051201	32
R051202	40
R051203	50
...	...
R051210	125



Cot 87° ♀ × ♀ / Elbow 87° ♀ × ♀  
Lakt 87° ♀ × ♀



📖	Ø (mm)
R051301	32
R051302	40
R051303	50
...	...
R051315	315

Cot 87° ♀ × ♀ / Elbow 87° ♀ × ♀  
Lakt 87° ♀ × ♀



📖	Ø (mm)
R051401	32
R051402	40
R051403	50
...	...
R051413	200

Cot 87° cu inchidere / Elbow 87° with seal  
Lakt 87° sa pečatom



📖	Ø (mm)
R051504	63
R051505	75
R051506	80
...	...
R051515	315

Secțiune 15°  
Section 15°  
Odjeljak 15°



📖	Ø (mm)
R051608	100
R051609	110
R051610	125
...	...
R051615	315

Secțiune 30°  
Section 30°  
Odjeljak 30°



📖	Ø (mm)
R051708	100
R051709	110
R051710	125
...	...
R051715	315

Cot dublu 87° paralel ♂ × ♀  
Double elbow 87° parallel ♂ × ♀  
Dvostruko Lakt 87° paralelno ♂ × ♀



📖	Ø (mm)
R051801	32
R051802	40
R051803	50
...	...
R051813	200

Cot dublu 87° pătrat ♂ × ♀  
Double elbow 87° square ♂ × ♀  
Dvostruko Lakt 87° kvadrat ♂ × ♀



📖	Ø (mm)
R051901	32
R051902	40
R051903	50
...	...
R051913	200

Cot dublu 87° paralel ♀ × ♀  
Double elbow 87° parallel ♀ × ♀  
Dvostruko Lakt 87° paralelno ♀ × ♀



📖	Ø (mm)
R052001	32
R052002	40
R052003	50
...	...
R052113	200

Cot double 87° pătrat ♀ × ♀  
Double elbow 87° square ♀ × ♀  
Dvostruko Lakt 87° kvadrat ♀ × ♀



📖	Ø (mm)
R052101	32
R052102	40
R052103	50
...	...
R052113	200

Teu rangă 87° ♂ × ♀  
Tee claw 87° ♂ × ♀  
T-komad kandža 87° ♂ × ♀



📖	Ø (mm)
R052201	32
R052202	40
R052203	40/32
...	...
R052206	50/32

Teu prangă 87° ♀ × ♀  
Tee claw 87° ♀ × ♀  
T-komad kandža 87° ♀ × ♀



📖	Ø (mm)
R052301	32
R052302	40
R052303	40/32
...	...
R052306	50/32

Cruce rangă 87° ♂ × ♀  
Cross claw 87° ♂ × ♀  
Križna kandža 87° ♂ × ♀



📖	Ø (mm)
R052401	32
R052402	40
R052403	40/32
R052404	50
R052405	50/40

Cruce rangă 87° ♀ × ♀  
Cross claw 87° ♀ × ♀  
Križna kandža 87° ♀ × ♀



📖	Ø (mm)
R052501	32
R052502	40
R052503	40/32
R052504	50
R052505	50/40

Teu 45° ♂ × ♀  
Tee 45° ♂ × ♀  
T-komad 45° ♂ × ♀



📖	Ø (mm)
R052601	32
R052602	40
R052603	40/32
...	...
R052672	315

Teu dublu 45° paralel ♂ × ♀  
Double Tee 45° parallel ♂ × ♀  
Dvostruki T 45° paralelno ♂ × ♀



📖	Ø (mm)
R052701	32
R052702	40
R052703	40/32
...	...
R052754	125/40

Teu dublu 45° pătrat ♂ × ♀  
Double Tee 45° square ♂ × ♀  
Dvostruki T 45° kvadrat ♂ × ♀



📖	Ø (mm)
R052801	32
R052802	40
R052803	40/32
...	...
R052854	125/40

Teu 45° ♀ × ♀  
Tee 45° ♀ × ♀  
T-komad 45° ♀ × ♀



📖	Ø (mm)
R052901	32
R052902	40
R052903	40/32
...	...
R052972	315

Teu dublu 45° paralel ♀ × ♀  
Double Tee 45° parallel ♀ × ♀  
Dvostruki T 45° paralelno ♀ × ♀



📖	Ø (mm)
R053001	32
R053002	40
R053003	40/32
...	...
R053046	125



Teu dublu 45° pătrat ♀ × ♀  
Double Tee 45° square ♀ × ♀  
Dvostruki T 45° kvadrat ♀ × ♀



📖	Ø (mm)
R053101	32
R053102	40
R053104	50
...	...
R053146	125

Teu 67° ♂ × ♀  
Tee 67° ♂ × ♀  
T-komad 67° ♂ × ♀



📖	Ø (mm)
R053201	32
R053202	40
R053203	40/32
...	...
R053262	200/100

Teu dublu 67° paralel ♂ × ♀  
Double Tee 67° parallel ♂ × ♀  
Dvostruki T 67° paralelno ♂ × ♀



📖	Ø (mm)
R053301	32
R053302	40
R053303	40/32
...	...
R053348	125/40

Teu dublu 67° pătrat ♂ × ♀  
Double Tee 67° square ♂ × ♀  
Dvostruki T 67° kvadrat ♂ × ♀



📖	Ø (mm)
R053401	32
R053402	40
R053404	50
...	...
R053447	125/50

Teu 67° ♀ × ♀  
Tee 67° ♀ × ♀  
T-komad 67° ♀ × ♀



📖	Ø (mm)
R053501	32
R053502	40
R053503	40/32
...	...
R053557	200

Teu dublu 67° paralel ♀ × ♀  
Double Tee 67° parallel ♀ × ♀  
Dvostruki T 67° paralelno ♀ × ♀



📖	Ø (mm)
R053601	32
R053602	40
R053603	40/32
...	...
R053642	125

Teu dublu 67° pătrat ♀ × ♀  
Double Tee 67° square ♀ × ♀  
Dvostruki T 67° kvadrat ♀ × ♀



📖	Ø (mm)
R053701	32
R053702	40
R053704	50
...	...
R053742	125

Teu 87° ♂ × ♀  
Tee 87° ♂ × ♀  
T-komad 87° ♂ × ♀



📖	Ø (mm)
R053801	32
R053802	40
R053803	40/32
...	...
R053872	315

Teu dublu 87° paralel ♂ × ♀  
Double Tee 87° parallel ♂ × ♀  
Dvostruki T 87° paralelno ♂ × ♀



📖	Ø (mm)
R053901	32
R053902	40
R053903	40/32
...	...
R053955	125/32

Teu dublu 87° pătrat ♂ × ♀  
Double Tee 87° square ♂ × ♀  
Dvostruki T 87° kvadrat ♂ × ♀



📖	Ø (mm)
R054001	32
R054002	40
R054003	40/32
...	...
R054054	125/40

Teu 87° ♀ × ♀  
Tee 87° ♀ × ♀  
T-komad 87° ♀ × ♀



📖	Ø (mm)
R054101	32
R054102	40
R054103	40/32
...	...
R054172	315

Teu dublu 87° paralel ♀ × ♀  
Double Tee 87° parallel ♀ × ♀  
Dvostruki T 87° paralelno ♀ × ♀



📖	Ø (mm)
R054201	32
R054202	40
R054203	40/32
...	...
R054246	125

Teu dublu 87° pătrat ♀ × ♀  
Double Tee 87° square ♀ × ♀  
Dvostruki T 87° kvadrat ♀ × ♀



📖	Ø (mm)
R054301	32
R054302	40
R054303	40/32
...	...
R054346	125

Teu 45° cu inchidere  
Tee 45° with seal  
T-komad 45° sa pečatom



📖	Ø (mm)
R054401	63
R054402	63/40
R054403	75
...	...
R054415	250

Teu dublu 45° paralel cu inchidere  
Double Tee 45° parallel with seal  
Dvostruki T 45° paralelno ♂ × ♀ sa pečatom



📖	Ø (mm)
R054501	63
R054503	75
R054504	80
...	...
R054514	200

Teu dublu 45° pătrat cu inchidere  
Double Tee 45° square with seal  
Dvostruki T 45° kvadrat sa pečatom



📖	Ø (mm)
R054601	63
R054603	75
R054604	80
...	...
R054614	200

Teu 67° cu inchidere  
Tee 67° with seal  
T-komad 67° sa pečatom



📖	Ø (mm)
R054701	63
R054702	75
R054703	75/40
...	...
R054714	200

Teu dublu 67° paralel cu inchidere  
Double Tee 67° parallel with seal  
Dvostruki T 67° paralelno sa pečatom



📖	Ø (mm)
R054801	63
R054802	75
R054804	80
...	...
R054814	200

Teu dublu 67° pătrat cu închidere  
Double Tee 67° square with seal  
Dvostruki T 67° kvadrat sa pečatom



📖	Ø (mm)
R054901	63
R054902	75
R054904	80
...	...
R054914	200

Teu 87° cu închidere  
Tee 87° with seal  
T-komad 87° sa pečatom



📖	Ø (mm)
R055001	63
R055002	75
R055003	80
...	...
R055015	250

Teu dublu 87° paralel cu închidere  
Double Tee 87° parallel with seal  
Dvostruki T 87° paralelno sa pečatom



📖	Ø (mm)
R055101	63
R055102	75
R055103	80
...	...
R055114	200

Teu dublu 87° pătrat cu închidere  
Double Tee 87° square with seal  
Dvostruki T 87° kvadrat sa pečatom



📖	Ø (mm)
R055201	63
R055202	75
R055203	80
...	...
R055214	200

Soclu dilatație V  
Dilatation socket V  
Dilataciona utičnica V



📖	Ø (mm)
R055301	32
R055302	40
R055303	50
...	...
R055314	250

Soclu dilatație H  
Dilatation socket H  
Dilataciona utičnica H



📖	Ø (mm)
R055401	32
R055402	40
R055403	50
...	...
R055414	250

Reductie interna  
Internal reduction  
Unutrašnja redukcija



📖	Ø (mm)
R055501	32/25
R055502	40/32
R055503	50/40
R055504	50/32
-	-

Reductie externa concentric  
Concentric external reduction  
Koncentrična eksterna redukcija



📖	Ø (mm)
R055601	250/160
R055602	250/125
R055603	250/110
...	...
R055610	315/100

Reductie externa excentric  
Excentric external reduction  
Ekscentrična eksterna redukcija



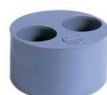
📖	Ø (mm)
R055701	40/32
R055702	50/40
R055703	50/32
...	...
R055764	315/160

Mufă 1x / Plug 1x  
Utikač 1x



📖	Ø (mm)
R055801	63/50
R055802	63/40
R055803	63/32
...	...
R055841	125/32

Mufă 2x / Plug 2x  
Utikač 2x



📖	Ø (mm)
R055901	80/32/32
R055902	90/40/32
R055903	90/32/32
...	...
R055919	125/32/32

Mufă 3x / Plug 3x  
Utikač 3x



📖	Ø (mm)
R056001	90/32/32/32
R056002	100/40/40/32
R056003	100/40/32/32
...	...
R056015	125/32/32/32

Capac / Cap  
Kapa



📖	Ø (mm)
R056101	32
R056102	40
R056103	50
...	...
R056113	200

Capac strans / Tight cap  
Čvrsta kapa



📖	Ø (mm)
R056202	40
R056203	50
R056204	63
...	...
R056212	200

Feder ♀ x ♀ / Groove ♀ x ♀  
Muff ♀ x ♀



📖	Ø (mm)
R056301	32
R056302	40
R056303	50
...	...
R056310	125

Manșon ♂ x ♀ / Socket ♂ x ♀  
Muff



📖	Ø (mm)
R056401	32
R056402	40
R056403	50
...	...
R056413	200

Manșon ♀ x ♀ / Socket ♀ x ♀  
Muff



📖	Ø (mm)
R056501	32
R056502	40
R056503	50
...	...
R056515	200

Manșon cu închidere / Socket with seal  
Muff sa pečatom



📖	Ø (mm)
R056601	63
R056602	75
R056603	80
R056604	90
R056605	100

🔧 Tubulaturi PVC SN4, KGEM și HT fittinguri disponibile la cerere / PVC ducting SN4, KGEM and HT fittings available on request / PVC kanali SN4, KGEM i HT okovi dostupni na zahtjev

**Tub presiune PVC / Pressure PVC pipe / Tlačna PVC cijev**

PN10



	Ø (mm)
R005340	20
R005341	25
R005342	32
...	...
R005321	315

PN16



	Ø (mm)
R005300	12
R005301	16
R005302	20
...	...
R005318	315

Translucid / Translucent  
Transparentan



	Ø (mm)
R005240	25
R005241	32
R005242	40
...	...
R005247	110

**Fittings PVC presiune / Pressure PVC fittings / Tlačne PVC armature**

Cot 90° lip. ♀ × lip. ♀  
Elbow 90° solv. ♀ × solv. ♀  
Lakt 90° ljep. ♀ × ljep. ♀



	Ø (mm)
R007501	16
R007502	20
R007503	25
...	...
R007520	315

Cot réduit 90° lip. ♀ × lip. ♀  
Reduced elbow 90° solv. ♀ × solv. ♀  
Lakt red. 90° ljep. ♀ × ljep. ♀



	Ø (mm)
R310101	40 × 32
R310102	50 × 32
R310103	50 × 40
R310104	50/40 × 50
R310105	63/50 × 63

Cot 90° lip. ♀ × lip. ♂  
Elbow 90° solv. ♀ × solv. ♂  
Lakt 90° ljep. ♀ × ljep. ♂



	Ø (mm)
R310201	50/40 × 50
R310202	63/50 × 63
-	-

Cot 45° lip. ♀ × lip. ♀  
Elbow 45° solv. ♀ × solv. ♀  
Lakt 45° ljep. ♀ × ljep. ♀



	Ø (mm)
R007601	16
R007602	20
R007603	25
...	...
R007620	315

Cot 45° lip. ♀ × lip. ♂  
Elbow 45° solv. ♀ × solv. ♂  
Lakt 45° ljep. ♀ × ljep. ♂



	Ø (mm)
R310301	50/40 × 50
R310302	63/50 × 63
-	-

Cot 90° scurt lip. ♀ × lip. ♀  
Bend 90° short solv. ♀ × solv. ♀  
Kratka krivina ljep. ♀ × ljep. ♀



	Ø (mm)
R007704	32
R007705	40
R007706	50
...	...
R007720	315

Cot 90° lung lip. ♀ × lip. ♀  
Bend 90° long solv. ♀ × solv. ♀  
Duga krivina ljep. ♀ × ljep. ♀



	Ø (mm)
R310401	16
R310402	20
R310403	25
...	...
R310413	160

Cot 45° lip. ♀ × lip. ♀  
Bend 45° solv. ♀ × solv. ♀  
Krivina 45° ljep. ♀ × ljep. ♀



	Ø (mm)
R007804	32
R007805	40
R007806	50
...	...
R007820	315

Teu lip. ♀  
Tee solv. ♀  
T-komad ljep. ♀



	Ø (mm)
R007901	16
R007902	20
R007903	25
...	...
R007920	315

Teu 45° lip. ♀ / Tee 45° solv. ♀  
T-komad 45° ljep. ♀



	Ø (mm)
R008001	16
R008002	20
R008003	25
...	...
R008016	250

Teu red. lip. ♀ / Reduced tee solv. ♀  
T-komad red. ljep. ♀



	Ø (mm)
R008101	20 × 16
R008102	25 × 16
R008103	25 × 20
...	...
R008160	315 × 225

Cruce lip. ♀ / Cross solv. ♀  
Krst ljep. ♀



	Ø (mm)
R008201	16
R008202	20
R008203	25
...	...
R008210	110

Manșon lip. ♀  
Socket solv. ♀  
Muff ljep. ♀



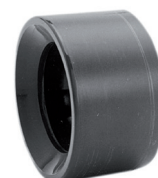
	Ø (mm)
R008301	16
R008302	20
R008303	25
...	...
R008320	315

Capac lip. ♀  
Cap solv. ♀  
Kapa ljep. ♀



	Ø (mm)
R008401	16
R008402	20
R008403	25
...	...
R008420	315

Reductie scurt lip. ♀ × lip. ♂  
Reduction short solv. ♀ × solv. ♂  
Kratka redukcija ljep. ♀ × ljep. ♂



	Ø (mm)
R008501	20 × 16
R008502	25 × 16
R008503	25 × 20
...	...
R008580	315 × 280

Reductie lung lip. ♀ × lip. ♀  
Reduction long solv. ♀ × solv. ♀  
Duga redukcija ljep. ♀ × ljep. ♀



📖	Ø (mm)
R008601	25/20 × 16
R008602	25/20 × 20
R008603	32/25 × 16
R008604	32/25 × 20
...	...

Bavură × lip. ♂  
Hose barb × solv. ♂  
Zarezana × ljep. ♂



📖	Ø (mm)
R008701	12 × 12
R008702	16 × 16
R008703	20 × 20
...	...
R008708	63 × 60

Guler canelate lip. ♀  
Flange adapter grooved solv. ♀  
Adapter prirubnice žljebljen ljep. ♀



📖	Ø (mm)
R008901	16
R008902	20
R008903	25
...	...
R008920	315

Guler neted lip. ♀  
Flange adapter flat solv. ♀  
Prirubnički adapter ravno ljep. ♀



📖	Ø (mm)
R310501	16
R310502	20
R310503	25
...	...
R310520	315

Flanșă PVC  
PVC flange backing ring  
PVC podložni prsten prirubnice



📖	Ø (mm)
R009001	16
R009002	20
R009003	25
...	...
R009020	315

Flanșă PA-PRFV  
PA-FRP flange backing ring  
PA-POSV noseći prsten prirubnice



📖	Ø (mm)
R310603	25
R310604	32
R310605	40
...	...
R310615	225

Flanșă oarbă  
Blind flange  
Slijepa prirubnica



📖	Ø (mm)
R310701	16
R310702	20
R310703	25
...	...
R310720	315

Guler-flanșă lip. ♀  
Flange solv. ♀  
Prirubnica ljep. ♀



📖	Ø (mm)
R310808	75
R310809	90
R310810	110
...	...
R310820	315

Guler-flanșă fil. ♀  
Flange thr. ♀  
Prirubnica navoj ♀



📖	Ø
R310901	½"
R310902	¾"
R310903	1"
...	...
R310909	4"

Garnitura  
Flat gasket  
Ravni pečat



📖	Ø (mm)
R009101	16
R009102	20
R009103	25
...	...
R009120	315

Șuruburi zinc 5.6 din oțel, A2 și A4  
Screw set 5.6 zinc plated steel, A2 & A4  
Set vijaka 5.6 pocinčani čelik, A2 & A4



📖	Ø (mm)
R311001	M12 × 60
R311002	M16 × 70
R311003	M16 × 80
...	...
R311040	M20 × 340

Cot 90° col. ♀ × fil. ♀  
Elbow 90° solv. ♀ × thr. ♀  
Lakt 90° ljep. ♀ × nav. ♀



📖	Ø (mm)
R009201	16 × ¾"
R009202	20 × ½"
R009203	25 × ¾"
...	...
R009207	63 × 2"

Cot 90° armat lip. ♀ × fil. ♀  
Elbow 90° reinforced solv. ♀ × thr. ♀  
Lakt ojačan. 90° ljep. ♀ × nav. ♀



📖	Ø (mm)
R009301	16 × ¾"
R009302	20 × ½"
R009303	25 × ¾"
...	...
R009310	110 × 4"

Cot 90° lip. ♀ × fil. ♂  
Elbow 90° solv. ♀ × thr. ♂  
Furtun



📖	Ø (mm)
R009405	32 × 1" ¼
R009406	40 × 1" ¼
R009408	50 × 1" ¼
R009409	50 × 1" ½
R009410	50 × 2"

Cot 90° vis. ♀ × fil. ♀  
Elbow 90° thr. ♀ × thr. ♀  
Lakt 90° nav. ♀ × nav. ♀



📖	Ø
R311101	¾"
R311102	½"
R311103	¾"
...	...
R311110	4"

Cot 90° armat fil. ♀ × fil. ♀  
Elbow 90° reinforced thr. ♀ × thr. ♀  
Lakt ojačan. 90° nav. ♀ × nav. ♀



📖	Ø
R311202	½"
R311203	¾"
R311204	1"
...	...
R311207	2"

Cot 45° fil. ♀ × fil. ♀  
Elbow 45° thr. ♀ × thr. ♀  
Lakt 45° nav. ♀ × nav. ♀



📖	Ø (mm)
R311302	½"
R311303	¾"
R311304	1"
R311306	1" ½
R311307	2"

Cot 45° armat lip. ♀ × fil. ♀  
Elbow 45° reinforced solv. ♀ × thr. ♀  
Lakt ojačan. 45° nav. ♀ × nav. ♀



📖	Ø (mm)
R311402	20 × ½"
R311403	25 × ¾"
R311404	32 × 1"
...	...
R311407	63 × 2"



Teu lip. ♀ × fil. ♀  
Tee solv. ♀ × thr. ♀  
T-kom. ljeper. ♀ × nav. ♀



📖	Ø (mm)
R009507	32 × 1"
R009511	40 × 1" 1/4
R009516	50 × 1" 1/2
R009522	63 × 2"
-	-

Teu armat lip. ♀ × fil. ♀  
Tee reinforced solv. ♀ × thr. ♀  
T-kom. ojačan. ljeper. ♀ × nav. ♀



📖	Ø (mm)
R009601	16 × 3/8"
R009602	20 × 1/2"
R009603	25 × 3/4"
...	...
R009610	110 × 4"

Teu col. ♀ × fil. ♂  
Tee solv. ♀ × thr. ♂  
T-kom. ljeper. ♀ × nav. ♂



📖	Ø (mm)
R009705	32 × 1"
R009706	32 × 1" 1/4
R009707	40 × 1"
...	...
R009718	63 × 2"

Teu 3 × fil. ♀  
Tee 3 × thr. ♀  
T-kom. 3 × nav. ♀



📖	Ø
R311501	3/8"
R311502	1/2"
R311503	3/4"
...	...
R311510	4"

Teu armat 3 × fil. ♀  
Tee reinforced 3 × thr. ♀  
T-kom. ojačan. 3 × nav. ♀



📖	Ø (mm)
R311602	1/2"
R311603	3/4"
R311604	1"
...	...
R311607	2"

Manșon lip. ♀ × fil. ♀  
Socket solv. ♀ × thr. ♀  
Muff ljeper. ♀ × nav. ♀



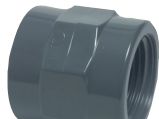
📖	Ø (mm)
R009801	16 × 3/8"
R009802	20 × 1/2"
R009803	25 × 1/2"
...	...
R009813	110 × 4"

Manșon armat lip. ♀ × fil. ♀  
Socket reinforced solv. ♀ × thr. ♀  
Muff ojačan. ljeper. ♀ × nav. ♀



📖	Ø (mm)
R009901	16 × 3/8"
R009902	20 × 1/2"
R009903	25 × 3/4"
...	...
R009910	110 × 4"

Manșon vis. ♀ × fil. ♀  
Socket thr. ♀ × thr. ♀  
Muff nav. ♀ × nav. ♀



📖	Ø
R311701	3/8"
R311702	1/2"
R311703	3/4"
...	...
R311710	4"

Bucșă lip. ♀ × fil. ♂  
Bush solv. ♀ × thr. ♂  
Tip nav. ♀ × nav. ♂



📖	Ø (mm)
R311801	25 × 1/2"
R311802	25 × 3/4"
R311803	32/25 × 1"
...	...
R311838	200 × 8"

Bucșă A lip. ♀ × fil. ♂  
Bush A solv. ♀ × thr. ♂  
Tip A ljeper. ♀ × nav. ♂



📖	Ø (mm)
R010203	20/16 × 3/8"
R010204	20/16 × 1/2"
R010205	20 × 1/2"
...	...
R010230	110 × 4"

Bucșă B lip. ♀ × fil. ♂  
Bush B solv. ♀ × thr. ♂  
Tip B ljeper. ♀ × nav. ♂



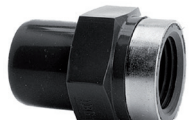
📖	Ø (mm)
R311901	32/40 × 1"
R311902	32/40 × 1" 1/4
R311903	40/50 × 1" 1/2
...	...
R311908	63/75 × 2" 1/2

Bucșă lip. ♂/♀ × fil. ♀  
Bush solv. ♂/♀ × thr. ♀  
Tip ljeper. ♂/♀ × nav. ♀



📖	Ø (mm)
R312001	20/16 × 3/8"
R312002	20/16 × 1/2"
R312003	20/16 × 3/4"
...	...
R312026	110/90 × 4"

Bucșă armat lip. ♂/♀ × fil. ♀  
Bush reinforced solv. ♂/♀ × thr. ♀  
Tip ojačan. ljeper. ♂/♀ × nav. ♀



📖	Ø (mm)
R312101	12/16 × 3/8"
R312102	16/20 × 1/2"
R312103	20/25 × 3/4"
...	...
R312107	50/63 × 2"

Bucșă reductie A lip. ♂/♀ × fil. ♀  
Reduced bush A solv. ♂/♀ × thr. ♀  
Tip red. A ljeper. ♂/♀ × nav. ♀



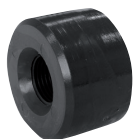
📖	Ø (mm)
R010301	50/40 × 1" 1/2
R010302	63/50 × 2"
R010303	75/63 × 2" 1/2
R010304	90/75 × 3"
-	-

Bucșă reductie B lip. ♂ × fil. ♀  
Reduced bush B solv. ♂ × thr. ♀  
Tip red. B ljeper. ♂/♀ × nav. ♀



📖	Ø (mm)
R010003	20 × 3/8"
R010004	25 × 3/8"
R010005	25 × 1/2"
...	...
R010031	125 × 4"

Bucșă reductie C lip. ♂ × fil. ♀  
Reduced bush C solv. ♂ × thr. ♀  
Tip red. C ljeper. ♂ × nav. ♀



📖	Ø (mm)
R312201	50 × 1/2"
R312202	50 × 3/4"
R312203	63 × 1/2"
...	...
R312206	75 × 3/4"

Bucșă reductie armat lip. ♂ × fil. ♀  
Reduced bush reinforced solv. ♂ × thr. ♀  
Tip red. ojačan. ljeper. ♂ × nav. ♀



📖	Ø (mm)
R010101	20 × 3/8"
R010102	25 × 1/2"
R010103	32 × 3/4"
...	...
R010106	63 × 1" 1/2

Niplu lip. ♂ × fil. ♂  
Nipple solv. ♂ × thr. ♂  
Bradavica ljeper. ♂ × nav. ♂



📖	Ø (mm)
R312301	16 × 3/8"
R312302	20 × 1/2"
R312303	25 × 3/4"
...	...
R312312	63 × 2"

Niplu fil. ♂ × fil. ♂  
Nipple thr. ♂ × thr. ♂  
Bradavica nav. ♂ × nav. ♂



📖	Ø
R010701	3/8"
R010703	1/2"
R010705	3/4"
...	...
R010713	2"

Niplu reductie fil. ♂ × fil. ♂  
Reduced nipple thr. ♂ × thr. ♂  
Bradavica red. nav. ♂ × nav. ♂



📖	Ø
R010704	1/2" × 3/8"
R010706	3/4" × 1/2"
R010708	1" × 3/4"
...	...
R010720	2" × 1" 1/2"

Niplu fil. ♂ × fil. ♀  
Nipple thr. ♂ × thr. ♀  
Bradavica nav. ♂ × nav. ♀



📖	Ø
R312502	1/2" × 3/8"
R312503	1/2" × 3/4"
R312504	3/4" × 3/8"
...	...
R312533	4" × 3"

Capac fil. ♀  
Cap thr. ♀  
Kapa nav. ♀



📖	Ø (mm)
R010601	3/8"
R010602	1/2"
R010603	3/4"
...	...
R010607	2"

Capac fil. ♂  
Plug thr. ♂  
Kapa nav. ♂



📖	Ø (mm)
R010801	3/8"
R010802	1/2"
R010803	3/4"
...	...
R010807	2"

Bavură × fil. ♂ sau ♀  
Hose barb × thr. ♂ or ♀  
Zarezana × nav. ♂ ili ♀



📖	Ø (mm)
R010902	3/8" × 16/18
...	...
R010915	2" × 60/66
R010921	3/4" × 16/18
...	...
R010932	2" 1/2 × 60

Cuplu pèrete despartitor flanșă × fil. ♂/♀  
Bulkhead fitting flange × thr. ♂/♀  
Pregrada prirubnica × nav. ♂/♀



📖	Ø (mm)
R011001	16 × 3/8"
R011002	20 × 1/2"
R011003	25 × 3/4"
R011004	40 × 1" 1/2"
R011005	63 × 2"

Cuplu pèrete despartitor lip. ♂/♀ × fil. ♂  
Bulkhead fitting solv. ♂/♀ × thr. ♂  
Pregrada ljep. ♂/♀ × nav. ♂



📖	Ø (mm)
R312601	20/25 × 3/4"
R312602	25/32 × 1"
R312603	32/40 × 1" 1/4"
...	...
R312610	110 × M133

Cuplu pèrete desp. lip. ♀/ lip. ♂ × fil. ♂  
Bulkhead fitting solv. ♀/ thr. ♂ × thr. ♂  
Pregrada ljep. ♀/nav. ♂ × nav. ♂



📖	Ø (mm)
R312701	20 × 3/4"
R312702	25 × 1"
R312703	32 × 1" 1/4"
...	...
R312709	90 × M113/4"

Uniune lip. ♀ × lip. ♀  
Union solv. ♀ × solv. ♀  
Spoj ljep. ♀ × ljep. ♀



📖	Ø (mm)
R011302	16
R011303	20
R011304	25
...	...
R011311	110

Uniune lip. ♀ × fil. ♀  
Union solv. ♀ × thr. ♀  
Spoj ljep. ♀ × nav. ♀



📖	Ø (mm)
R011501	16 × 3/8"
R011502	20 × 1/2"
R011503	25 × 3/4"
...	...
R011510	110 × 4"

Uniune lip. ♀ × fil. ♂  
Union solv. ♀ × thr. ♂  
Spoj ljep. ♀ × nav. ♂



📖	Ø (mm)
R011401	16 × 3/8"
R011402	20 × 1/2"
R011403	25 × 3/4"
...	...
R011410	110 × 4"

Uniune fil. ♀ × fil. ♀  
Union thr. ♀ × thr. ♀  
Spoj nav. ♀ × nav. ♀



📖	Ø
R312801	3/8"
R312802	1/2"
R312803	3/4"
...	...
R312810	4"

Uniune fil. ♀ × fil. ♂  
Union thr. ♀ × thr. ♂  
Spoj nav. ♀ × nav. ♂



📖	Ø (mm)
R312902	1/2"
R312903	3/4"
R312904	1"
...	...
R312910	4"

Capat olandez  
Union end  
Spoj, ovratnik



📖	Ø (mm)
R313001	16
R313002	20
R313003	25
...	...
R313010	110

Bucșă olandeză  
Union bush  
Spoj, tip



📖	Ø (mm)
R313101	16
R313102	20
R313103	25
...	...
R313110	110

Piuliță olandeză  
Union nut  
Spoj, orah



📖	Ø (mm)
R313201	16
R313202	20
R313203	25
...	...
R313210	110

Garnitura  
Union O-ring  
O-prsten



📖	Ø (mm)
R313301	16
R313302	20
R313303	25
...	...
R313310	110

Șurub șa ♀ / Clamp saddle ♀  
Stezaljka sedla ♀



📖	Ø (mm)
R044401	20 × ½"
R044402	25 × ½"
R044403	25 × ¾"
...	...
R044490	315 × 4"

Adaptor lip. ♀ / Pipe connector ♀  
Priključak za cijev ♀



📖	Ø (mm)
R011204	50 × ½"
R011207	63 × ½"
-	-

Colector 3x / 3x Collector  
Kolektor 3x



📖	Ø (mm)
R313701	50
R313702	63
-	-

🔧 PVC cu diametrul de tubulatură tabel de conversie pag 201 / PVC piping diameter conversion table page 201  
Tabela za konverziju prečnika PVC cevi strana 201

dimensiuni imperiale la cerere / imperial dimensions available on request / Imperijalne dimenzije dostupne na zahtjev

### Supape cu bilă din PVC 2-cai / 2-ways PVC ball valves / Dvosmjerni PVC kuglasti ventili

S4 lip. ♀ / S4 solv. ♀  
S4 ljep. ♀



📖	Ø (mm)
R121116	16
R121118	20
R121120	25
...	...
R121746	110

S4 lip. ♂ / S4 solv. ♂  
S4 ljep. ♂



📖	Ø (mm)
R121239	16
R121241	20
R121243	25
...	...
R125274	110

S4 fil. ♀ / S4 thr. ♀  
S4 nav. ♀



📖	Ø
R121132	¾"
R121134	½"
R121136	¾"
...	...
R121148	3"

S4 flanșă / S4 flange  
S4 prirubnica



📖	Ø (mm)
R124200	16
R122277	20
R122276	25
...	...
R124209	110

S4 fuziune PE ♀ / S4 PE fusion ♀  
S4 PE fuzija ♀



📖	Ø (mm)
R125357	16
R125358	20
R125359	25
...	...
R125366	110

S4 fuziune PE ♂ / S4 PE fusion ♂  
S4 PE fuzija ♂



📖	Ø (mm)
R121150	16
R121152	20
R121154	25
...	...
R122637	110

Brațară S4 / S4 Bracket  
S4 nosač



📖	DN
R170276	10/15
R170277	20
R170278	25
...	...
R170267	80

Comutator de limitare / Limit switch box  
Kutija graničnih prekidača



📖	Ø (mm)
R300110	50
R300120	63
-	-

S6 lip. ♀ / S6 solv. ♀  
S6 ljep. ♀



📖	Ø (mm)
R012001	16
R012002	20
R012003	25
...	...
R012010	110

S6 fil. ♀ / S6 thr. ♀  
S6 nav. ♀



📖	Ø
R127701	¾"
R127702	½"
R127703	¾"
...	...
R129027	2" ½"

S6 fuziune PE ♀ / S6 PE fusion ♀  
S6 PE fuzija ♀



📖	Ø (mm)
R126966	16
R126967	20
R126968	25
...	...
R129021	75

S6 fuziune PE ♂ / S6 PE fusion ♂  
S6 PE fuzija ♂



📖	Ø (mm)
R127706	16
R127707	20
R127708	25
...	...
R129023	75

Supape, de asemenea, disponibile din PP sau PVDF  
Valves also available made of PP or PVDF  
Dostupni su i ventili od PP ili PVDF

### Supape cu bilă din PVC 3-cai / 3-ways PVC ball valves / 3-smjerni PVC kuglasti ventili

S4 L lip. ♀ / S4 L solv. ♀  
S4 L ljep. ♀



📖	Ø (mm)
R120626	16
R120628	20
R121832	25
...	...
R122719	63

S4 L fil. ♀ / S4 L thr. ♀  
S4 L nav. ♀



📖	Ø
R120635	3/8"
R120637	1/2"
R120942	3/4"
...	...
R120606	2"

S4 T lip. ♀ / S4 T solv. ♀  
S4 T ljep. ♀



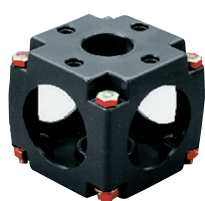
📖	Ø (mm)
R120625	16
R120627	20
R121816	25
...	...
R122716	63

S4 T fil. ♀ / S4 T thr. ♀  
S4 T nav. ♀



📖	Ø
R120634	3/8"
R120636	1/2"
R120938	3/4"
...	...
R120941	2"

Brătară S4 / S4 bracket  
S4 nosač



📖	DN
R170042	10/15
R170022	20/25
R170001	32/40
R170018	50
-	-

Comutator de limitare / Limit switch box  
Kutija graničnih prekidača



📖	Ø (mm)
R300110	50
R300120	63
-	-

### Supape PVC membrană / PVC diaphragm valves / PVC membranski ventili

T4 lip. ♀ / T4 solv. ♀  
T4 ljep. ♀



📖	Ø (mm)
R012402	20
R012403	25
R012404	32
...	...
R012407	63

T4 lip. ♂ / T4 solv. ♂  
T4 ljep. ♂



📖	Ø (mm)
R122205	20
R122206	25
R122207	32
...	...
R120186	75

T4 fil. ♀ / T4 thr. ♀  
T4 nav. ♀



📖	Ø
R127130	1/2"
R127131	3/4"
R127132	1"
...	...
R127135	2"

T4 flanșă / T4 flange  
T4 prirubnica



📖	Ø (mm)
R120189	20
R120190	25
R120191	32
...	...
R120198	75

T4 fuziune PE ♀ / T4 PE fusion ♀  
T4 PE fuzija ♀



📖	Ø (mm)
R127136	20
R127137	25
R127138	32
...	...
R127141	63

T4 fuziune PE ♂ / T4 PE fusion ♂  
T4 PE fuzija ♂



📖	Ø (mm)
R127142	20
R127143	25
R127144	32
...	...
R127147	63

Membrană cu șurub  
Diaphragm with screw  
Dijafragma sa vijkom



📖	DN
R250457	15/20
R250458	25
R250459	32/40
...	...
R120934	100/125

Membrană fara șurub  
Diaphragm without screw  
Dijafragma bez zavrtnja



📖	DN
R250461	15/20
R250462	25
R250463	32/40
R250464	50
-	-

Placă de montaj  
Mounting plate  
Montažna ploča



📖	↑ (mm) - DN
R101256	16 - 10/20/25
R101255	23 - 15/20/25
R101257	3 - 15/20/25
...	...
R101260	7 - 32/40/50

Supape, de asemenea, disponibile din PP sau PVDF  
Valves also available made of PP or PVDF  
Dostupni su i ventili od PP ili PVDF



**Vane de închidere / Gate valves / Zasun**

Robinet cu ventil înclinat PVC  
PVC slanted seat valve  
PVC kosi ventil sa sjeđistem



📖	Ø (mm)
R013850	16
R013851	20
R013852	25
...	...
R013856	63

Robinet cu ventil înclinat PP  
PP slanted seat valve  
PP ventil sa kosim sjeđistem



📖	Ø (mm)
R013901	½"
R013902	¾"
R013903	1"
...	...
R013906	2"

Cane de inchidere PP sau PVC  
PP or PVC gate valve  
PP ili PVC zasun



📖	Ø (mm)
R013801	¾"
R013802	1"
-	-

**Robinet PVC fluture & alunecare / PVC butterfly & slide gate valves / PVC leptir & klizni zasun**

Fluture K4  
Butterfly K4  
Leptir K4



📖	Ø (mm)
R012802	63/75
R012804	90
R012805	110
...	...
R012809	250

Fluture K4 engrenaj cu melc  
Butterfly K4 worm gear  
Leptir K4 pužna oprema



📖	Ø (mm)
R126010	75
R126011	90
R126012	110
...	...
R126014	225

Fluture S4  
Butterfly S4  
Leptir S4



📖	Ø (mm)
R012790	63
R012791	75
R121919	90
...	...
R121872	225

Set de șuruburi și contraflanșe  
Screw and counter-flange set  
Set vijaka i kontra-prirubnica



📖	Ø (mm)
R012851	75
R012852	90
R012853	110
...	...
R012859	250

Alunecare PVC lip. ♀  
Slide gate PVC solv. ♀  
Klizna kapija PVC ljep. ♀



📖	Ø (mm)
R270968	50
R270632	63
R270632	63
...	...
R271461	110

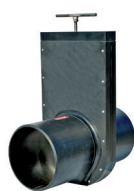
Alunecare oțel inox. lip. ♀  
Slide gate st. steel solv. ♀  
Klizna kapija nehrđajući čelik ljep. ♀



📖	Ø (mm)
R013979	90
R013980	110
R013982	160
...	...
R013985	315

**Supape Proagria HDPE / Proagria HDPE valves / Proagria HDPE ventili**

SVL alunecare / SVL sliding valve  
SVL klizni ventil



📖	DN
R014001	100
R014002	125
R014003	150
...	...
R014006	300

SVLT alunecare / SVLT sliding valve  
SVLT klizni ventil



📖	DN
R060101	100
R060102	125
R060103	150
...	...
R060106	300

FVL alunecare / FVL sliding valve  
FVL klizni ventil



📖	DN
R060201	100
R060202	125
R060203	150
...	...
R060206	300

RVL alunecare / RVL sliding valve  
RVL klizni ventil



📖	DN
R060301	100
R060302	125
R060303	150
...	...
R060306	300

GV alunecare / GV sliding valve  
GV klizni ventil



📖	DN
R060401	100
R060402	125
R060403	150
...	...
R060406	300

SVM-TG 1 oprire / SVM-TG 1 stop valve  
SVM-TG 1 zaustavni ventil



📖	DN
R014101	100
R014102	125
R014103	150
...	...
R014109	600

SVM-TG 2 oprire / SVM-TG 2 stop valve  
SVM-TG 2 zaustavni ventil



📖	DN
R060501	700
R060502	800
R060503	900
R060504	1000
R060505	1200

RVM-TG oprire / RVM-TG stop valve  
RVM-TG zaustavni ventil



📖	DN
R060601	100
R060602	125
R060603	150
...	...
R060609	600

DV fluture / DV butterfly valve  
DV leptir ventil



📖	DN
R060701	100
R060702	125
R060703	150
...	...
R060709	500

TV 3-cai / TV 3-ways  
TV 3-smjerni



	DN
R060801	100
R060802	125
R060803	150
R060804	200
-	-

TV-B 3-cai / TV-B 3-ways  
TV-B 3-smjerni



	DN
R060901	100
R060902	125
R060903	150
R060904	200
-	-

SPP ecluza / SPP sluice gate  
SPP kapija



	DN
R061001	100
R061002	125
R061003	150
-	-

SPH ecluza / SPH sluice gate  
SPH kapija



	DN
R061101	100
R061102	125
R061103	150
-	-

SPS-TL ecluza / SPS-TL sluice gate  
SPS-TL kapija



	DN
R014201	200
R014202	250
R014203	300
...	...
R014206	600

SPS-RTL ecluza / SPS-RTL sluice gate  
SPS-RTL kapija



	DN
R061201	200
R061202	250
R061203	300
...	...
R061206	600

SPS-TG poarta stăvilor / SPS-TG weir gate  
SPS-TG brana kapija



	DN
R061301	200
R061302	250
R061303	300
...	...
R061306	600

SPK-TG poarta stăvilor / SPK-TG weir gate  
SPK-TG brana kapija



	DN
R014302	150
R014303	200
R014304	250
...	...
R014308	800

SPK-B-TG stăvilor / SPK-B-TG weir gate  
SPK-B-TG brana kapija



	DN
R061501	200
R061502	250
R061503	300
...	...
R061508	800

SPM-S-TG stăvilor / SPM-S-TG weir gate  
SPM-S-TG brana kapija



	DN
R061603	800
R061604	1000
R061605	1200
R061606	1400

SPM-H-TG stăvilor / SPM-H-TG weir gate  
SPM-H-TG brana kapija



	→↑ (mm)
R061751	630
R061752	800
R061753	1000
R061754	1200

SPM-P-TG stăvilor / SPM-P-TG weir gate  
SPM-P-TG brana kapija



	→↑ (mm)
R061703	800
R061704	1000
R061705	1200
R061706	1400

MPV-TG preaplin / MPV-TG overflow gate  
MPV-TG prelivna kapija



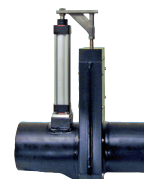
	→↑ (mm)
R061801	ⓘ
...	

KS canal ecluză / KS channel sluice  
KS kanalski otvor



	→↑ (mm)
R061901	600 × 400
R061902	500 × 600
R061903	700 × 600
R061904	900 × 600
R061905	900 × 700

Actuatori / Actuators  
Aktuatori



	DESCR.
R062010	elec.
R062020	pneum.
R062030	hydr. / hidr.
-	-
-	-

SPU hydraulic spălare / SPU flushing gate  
SPU kapija za ispiranje



	→↑ (mm)
R062101	ⓘ
...	

ALU oprire / ALU stop log  
ALU stop dnevnik



	→↑ (mm)
R062201	ⓘ
...	

KVR clapetă / KVR flap valve  
KVR klapni ventil



	DN
R062301	100
R062302	150
-	-

KVM clapetă / KVM flap valve  
KVM klapni ventil



	DN
R062401	100
R062402	125
R062403	150
-	-

KVU clapetă / KVU flap valve  
KVU klapni ventil



	DN
R062501	100
R062502	150
-	-

KVF clapetă / KVF flap valve  
KVF klapni ventil



	DN
R062601	100
R062602	150
-	-

OPV clapetă / OPV flap valve  
OPV klapni ventil



	DN
R062701	100
R062702	150
-	-

IKV clapetă / IKV flap valve  
IKV klapni ventil



	DN
R062801	100
R062802	150
-	-

IKF clapetă / IKF flap valve  
IKF klapni ventil



	DN
R062901	100
R062902	150
R062903	200
-	-

## Supape de reglare / Regulation valves / Regulacioni ventili

Comandă deschis/inchis hidraulic  
On/Off hydraulic control valve  
On/Off hidraulički kontrolni ventil



	DN
R070101	40
R070102	50
R070103	65
...	...
R070106	150

Acționează reducând, de presiune directă  
Direct acting pressure reducing valve  
Ventil za smanjenje pritiska direkt. dejstva



	Ø
R070201	¾"
R070202	1"
R070203	1" ½
-	-

Reducere a presiunii  
Pressure reducing valve  
Ventil za smanjenje pritiska



	DN
R070301	40
R070302	50
R070303	65
...	...
R070306	150

Reducerea presiunii și susținerea supapei  
Pressure reducing and sustaining valve  
Ventil za smanjenje i održavanje pritiska



	DN
R070401	40
R070402	50
R070403	65
...	...
R070406	150

Presiune de susținere  
Pressure sustaining valve  
Ventil za održavanje pritiska



	DN
R070501	40
R070502	50
R070503	65
...	...
R070506	150

Eliberare a presiunii  
Pressure relief valve  
Ventil za smanjenje pritiska



	DN
R070601	40
R070602	50
R070603	65
...	...
R070606	150

Reglare a debitului  
Flow control valve  
Ventil za kontrolu protoka



	DN
R070701	40
R070702	50
R070703	65
...	...
R070706	150

Controlul debitului, a presiunii de reducere  
Flow control and pressure reducing valve  
Regulacija protoka i ventil za red. pritiska



	DN
R070801	40
R070802	50
R070803	65
...	...
R070806	150

filtrează din spate hidraulică de spălare  
Filter backwash hydraulic valve  
Hidr. ventil za povratno ispiranje filtera



	DN
R070901	50 × 50
R070902	80 × 80
R070903	80 × 80 / 50
-	-

☞ PVC cu diametrul de tubulatură tabel de conversie pag 201 / PVC piping diameter conversion table page 201  
Tabela za konverziju prečnika PVC cevi strana 201

## Supapă mixaj / Mixing valves / Ventili za miješanje

PVC / PVC  
PVC



	Ø
R071601	2"
R071602	3"
-	-

Fontă / Cast iron  
Liveno gvožđe



	DN
R071701	15
R071702	20
R071703	25
...	...
R071709	100

Bronz / Bronze  
Bronza



	Ø (mm)
R071801	15
R071802	20
R071803	25
...	...
R071806	50

**Robinete cu bilă din PVC acționat electric / Electric actuated PVC ball valves / PVC kuglasti ventili sa električnim pogonom**

S4 2x lip.  $\varnothing$  24V / S4 2x solv.  $\varnothing$  24V  
S4 2x ljep.  $\varnothing$  24V



	$\varnothing$ (mm)
R125549	16
R125550	20
R125551	25
...	...
R122223	110

S4 2x fil.  $\varnothing$  24V / S4 2x thr.  $\varnothing$  24V  
S4 2x nav.  $\varnothing$  24V



	$\varnothing$ (mm)
R122678	16
R127246	20
R127247	25
...	...
R127333	90

S4 2x flanșă 24V / S4 2x flange 24V  
S4 2x prirubnica 24V



	$\varnothing$ (mm)
R127043	16
R127044	20
R122787	25
...	...
R127340	110

S4 2x lip.  $\varnothing$  230V / S4 2x solv.  $\varnothing$  230V  
S4 2x ljep.  $\varnothing$  230V



	$\varnothing$ (mm)
R125549	16
R125550	20
R125551	25
...	...
R122225	110

S4 2x fil.  $\varnothing$  230V / S4 2x thr.  $\varnothing$  230V  
S4 2x nav.  $\varnothing$  230V



	$\varnothing$ (mm)
R122678	16
R127246	20
R127247	25
...	...
R127353	90

S4 2x flanșă 230V / S4 2x flange 230V  
S4 2x prirubnica 230V



	$\varnothing$ (mm)
R127043	16
R127044	20
R122787	25
...	...
R127360	110

S4 3x T lip.  $\varnothing$  24V  
S4 3x T solv.  $\varnothing$  24V  
S4 3x T ljep.  $\varnothing$  24V



	$\varnothing$ (mm)
R125558	16
R125559	20
R125560	25
...	...
R122231	63

S4 3x L lip.  $\varnothing$  230V  
S4 3x L solv.  $\varnothing$  230V  
S4 3x L ljep.  $\varnothing$  24V



	$\varnothing$ (mm)
R125558	16
R125559	20
R125560	25
...	...
R121995	63

Acționare ER Premier  
Actuator ER Premier  
Pogon ER Premier



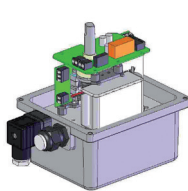
	$\epsilon$ (Nm) / $\swarrow$ (V)
R301001	20 / 230
R301002	20 / 24
...	...
R301005	100 / 230
R301006	100 / 24

Acționare ER Plus  
Actuator ER Plus  
Pogon ER Plus



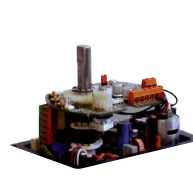
	$\epsilon$ (Nm) / $\swarrow$ (V)
R301101	10 / 230
R301102	10 / 24
...	...
R301111	100 / 230
R301112	100 / 24

Securitate ER Plus Failsafe  
Security system ER Plus Failsafe  
Sigurnosni sistem ER Plus Failsafe



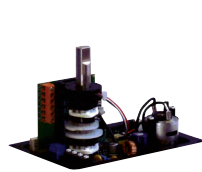
	DESCR.
R301201	Failsafe
-	-

Poziționare ER Plus Posi  
Positioning system ER Plus Posi  
Sistem za pozicioniranje ER Plus Posi



	DESCR.
R301301	Posi
-	-

Optiune 3 pozitii ER Plus GF3  
Option 3 positions ER Plus GF3  
Opcija 3 pozicije ER Plus GF3



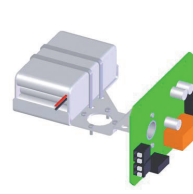
	DESCR.
R301401	GF3
-	-

Acționare VR-VS  
Actuator VR-VS  
Pogon VR-VS



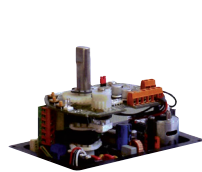
	$\epsilon$ (Nm) / $\swarrow$ (V)
R301501	25 / 400
R301502	25 / 230
R301503	25 / 24
...	...
R301522	1000 / 230

Securitate VR-VS Failsafe  
Security system VR-VS Failsafe  
Sigurnosni sistem VR-VS Failsafe



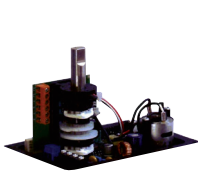
	DESCR.
R301601	Failsafe
-	-

Poziționare VR-VS Posi  
Positioning system VR-VS Posi  
Sistem pozicioniranja VR-VS Posi



	DESCR.
R301701	Posi
-	-

Optiune 3 pozitii VR-VS Plus GF3  
Option 3 positions VR-VS Plus GF3  
Opcija 3 pozicije VR-VS Plus GF3



	DESCR.
R301801	GF3
-	-

Set adaptor electric  
Electric adapter set  
Komplet električnih adaptera



	DN
R122103	10/15
R122083	20/25
R121985	32
...	...
R122065	80



**Robinete cu bilă din PVC acționat pneumatic / Pneumatic actuated PVC ball valves / PVC kuglasti ventili sa pneumatskim pogonom**

S4 2x lip. ♀ NI / S4 2x solv. ♀ NC  
S4 2x ljep. ♀ NZ



📖	Ø (mm)
R122408	16
R122409	20
R122410	25
...	...
R122417	110

S4 2x fil. ♀ NI / S4 2x thr. ♀ NC  
S4 2x nav. ♀ NZ



📖	Ø
R127432	3/8"
R127433	1/2"
R127434	3/4"
...	...
R127440	3"

S4 2x flanșă NI / S4 2x flange NC  
S4 2x prirubnica NZ



📖	Ø (mm)
R127452	16
R127453	20
R127454	25
...	...
R127461	110

S4 2x lip. ♀ ND / S4 2x solv. ♀ NO  
S4 2x ljep. ♀ NO



📖	Ø (mm)
R124470	16
R124471	20
R124472	25
...	...
R124479	110

S4 2x fil. ♀ ND / S4 2x thr. ♀ NO  
S4 2x nav. ♀ NO



📖	Ø (mm)
R127513	3/8"
R127514	1/2"
R127515	3/4"
...	...
R127521	3"

S4 2x flanșă ND / S4 2x flange NO  
S4 2x prirubnica NO



📖	Ø (mm)
R127533	16
R127534	20
R127535	25
...	...
R127542	110

S4 2x lip. ♀ DA / S4 2x solv. ♀ DA  
S4 2x ljep. ♀ DA



📖	Ø (mm)
R122418	16
R122419	20
R122420	25
...	...
R122427	110

S4 2x fil. ♀ DA / S4 2x thr. ♀ DA  
S4 2x nav. ♀ DA



📖	Ø (mm)
R127574	3/8"
R127575	1/2"
R127576	3/4"
...	...
R127582	3"

S4 2x flanșă DA / S4 2x flange DA  
S4 2x prirubnica DA



📖	Ø (mm)
R127594	16
R127595	20
R127596	25
...	...
R127603	110

S4 3x L lip. ♀ NI / S4 3x L solv. ♀ NC  
S4 3x L ljep. ♀ NZ



📖	Ø (mm)
R125762	16
R125763	20
R125764	25
...	...
R125768	63

S4 3x L lip. ♀ ND / S4 3x L solv. ♀ NO  
S4 3x L ljep. ♀ NO



📖	Ø (mm)
R126716	16
R126717	20
R126718	25
...	...
R126722	63

S4 3x L lip. ♀ DA / S4 3x L solv. ♀ DA  
S4 3x L ljep. ♀ DA



📖	Ø (mm)
R126700	16
R126701	20
R126702	25
...	...
R126706	63

S4 3x T lip. ♀ NI / S4 3x T solv. ♀ NC  
S4 3x T ljep. ♀ NZ



📖	Ø (mm)
R126713	16
R124998	20
R124999	25
...	...
R125321	63

S4 3x T lip. ♀ ND / S4 3x T solv. ♀ NO  
S4 3x T ljep. ♀ NO



📖	Ø (mm)
R126723	16
R126724	20
R126725	25
...	...
R126729	63

S4 3x T lip. ♀ DA / S4 3x T solv. ♀ DA  
S4 3x T ljep. ♀ DA



📖	Ø (mm)
R126707	16
R126708	20
R125317	25
...	...
R126712	63

Comutator de limitare  
Limit switch box  
Kutija graničnih prekidača



📖	DESCR.
R250914	UT
-	-

Electrovalvă Namur  
Namur solenoid valve  
Namur magnetni ventil



📖	↗
R250062	24 VDC
R250061	230 VAC
-	-

Set adaptor pneumatic  
Pneumatic adapter set  
Set pneumatskih adaptera



📖	Ø (mm)
R122103	10/15
R122083	20/25
R121985	32
...	...
R122065	80

Note / Note / Bilješka :

NF / NC / NZ = inchis normal / normally closed / normalno zatvoren  
NO / NO / NO = deschis normal / normally open / normalno otvoren  
DA / DA / DA = actionare dubla / double acting / dvostruko djelovanje

**Robinete cu membrană din PVC acționat pneumatic / Pneumatic actuated PVC diaphragm valves / Pnevumatski aktivirani PVC membranski ventili**

 T4 2x lip. ♀ NI / T4 2x solv. ♀ NC  
 T4 2x ljep. ♀ NZ


	Ø (mm)
R125616	20
R125619	25
R125622	32
...	...
R125631	63

 T4 2x lip. ♂ NI / T4 2x solv. ♂ NC  
 T4 2x ljep. ♂ NZ


	Ø (mm)
R125588	20
R125591	25
R125594	32
...	...
R125603	63

 T4 2x flanșă NI / T4 2x flange NC  
 T4 2x prirubnica NZ


	Ø (mm)
R125652	20
R125655	25
R125658	32
...	...
R125667	63

 T4 2x lip. ♀ ND / T4 2x solv. ♀ NO  
 T4 2x ljep. ♀ NO


	Ø (mm)
R125642	20
R125644	25
R125645	32
...	...
R125648	63

 T4 2x lip. ♂ ND / T4 2x solv. ♂ NO  
 T4 2x ljep. ♂ NO


	Ø (mm)
R126051	20
R126053	25
R126055	32
...	...
R126061	63

 T4 2x flanșă ND / T4 2x flange NO  
 T4 2x prirubnica NO


	Ø (mm)
R126086	20
R126088	25
R126090	32
...	...
R126096	63

 T4 2x lip. ♀ DA / T4 2x solv. ♀ DA  
 T4 2x ljep. ♀ DA


	Ø (mm)
R125635	20
R125636	25
R125637	32
...	...
R125640	63

 T4 2x lip. ♂ DA / T4 2x solv. ♂ DA  
 T4 2x ljep. ♂ DA


	Ø (mm)
R125607	20
R125608	25
R125609	32
...	...
R125612	63

 T4 2x bride DA / T4 2x flange DA  
 T4 2x prirubnica DA


	Ø (mm)
R125671	20
R125672	25
R125673	32
...	...
R125676	63

 T4 2x lip. ♀ Comp. Pos. 4-20 mA  
 T4 2x solv. ♀ Comp. Pos. 4-20 mA  
 T4 2x ljep. ♀ Comp. Pos. 4-20 mA


	Ø (mm)
R126651	20
R126652	25
R126653	32
...	...
R126656	63

 Comutator de limitare  
 Limit switch box  
 Kutija graničnih prekidača


	Ø (mm)
R250908	12-48 VAC/DC
R250910	110-250 VAC/DC
R250912	10-30 VDC

 Electrovalvă Namur  
 Namur solenoid valve  
 Namur magnetni ventil


	Ø (mm)
R250062	24 VDC
R250061	230 VAC
-	-

 T4 2x lip. ♀ acționare directă  
 T4 2x solv. ♀ direct acting  
 T4 2x ljep. ♀ direktna gluma


	Ø (mm)
R122816	20
R122817	25
R122818	32
...	...
R122821	63

 T4 2x lip. ♂ acționare directă  
 T4 2x solv. ♂ direct acting  
 T4 2x ljep. ♂ direktna gluma


	Ø (mm)
R122822	20
R122823	25
R122824	32
...	...
R122827	63

 Placă de montaj  
 Mounting plate  
 Montažna ploča


	↑ (mm) - DN
R101256	16 - 10/20/25
R101255	23 - 15/20/25
R101257	3 - 15/20/25
...	...
R101260	7 - 32/40/50

**Robinete tip fluture din PVC acționat electric / Electric actuated PVC butterfly valves / PVC leptir ventili sa električnim pogonom**

 K4 24V / K4 24V  
 K4 24V


	DN
R301901	40
R301902	50
R301903	65
...	...
R301911	300

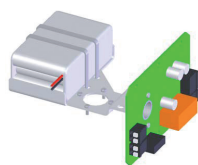
 K4 230V / K4 230V  
 K4 230V


	DN
R302001	40
R302002	50
R302003	65
...	...
R302011	300

 K4 400V / K4 400V  
 K4 400V


	DN
R302101	40
R302102	50
R302103	65
...	...
R302111	300

Securitate VR-VS Failsafe  
Security system VR-VS Failsafe  
Sigurnosni sistem VR-VS Failsafe



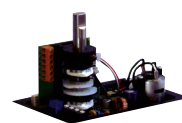
📖	DESCR.
R301601	Failsafe
-	-

Poziționare VR-VS Posi  
Positioning system VR-VS Posi  
Sistem pozicioniranja VR-VS Posi



📖	DESCR.
R301701	Posi
-	-

Optiune 3 pozitii VR-VS Plus GF3  
Option 3 positions VR-VS Plus GF3  
Opcija 3 pozicije VR-VS Plus GF3



📖	DESCR.
R301801	GF3
-	-

**Robinete tip fluture din PVC acționat pneumatic / Pneumatic actuated PVC butterfly valves / Pneumatski aktivirani PVC leptir ventili**

K4 NI / K4 NC  
K4 NZ



📖	Ø (mm)
R125885	75
R125886	90
R125887	110
...	...
R125889	225

K4 ND / K4 NO  
K4 NO



📖	Ø (mm)
R125935	75
R125936	90
R125937	110
...	...
R125939	225

K4 DA / K4 DA  
K4 DA



📖	Ø (mm)
R125910	75
R125911	90
R125912	110
...	...
R125914	225

S4 NI / S4 NC  
S4 NZ



📖	Ø (mm)
R122932	90
R122933	110
R122934	140
...	...
R122936	225

S4 ND / S4 NO  
S4 NO



📖	Ø (mm)
R122339	90
R122340	110
R122342	140
...	...
R122341	225

S4 DA / S4 DA  
S4 DA



📖	Ø (mm)
R122331	90
R122332	110
R122337	140
...	...
R122338	225

Comutator de limitare  
Limit switch box  
Kutija graničnih prekidača



📖	Ø (mm)
R250914	UT
-	-

Electrovalvă Namur  
Namur solenoid valve  
Namur magnetni ventil



📖	Ø (mm)
R250062	24 VDC
R250061	230 VAC
-	-

Set adaptor pneumatic  
Pneumatic adapter set  
Set pneumatskih adaptera



📖	Ø (mm)
R122103	10/15
R122083	20/25
R121985	32
...	...
R122065	80

Note / Note / Bilješka :

NF / NC / NZ = închis normal / normally closed / normalno zatvoren  
NO / NO / NO = deschis normal / normally open / normalno otvoren  
DA / DA / DA = actionare dubla / double acting / dvostruko djelovanje

**Electrovalve / Solenoid valves / Solenoidni ventili**

Acțiune directă - Piston  
Direct acting - Plunger  
Direktno djelovanje - klip



📖	DESCR.
R072501	6011
R072502	6013
R072503	0255
...	...
R072509	0355

Acțiune directă - Pivot  
Direct acting - Pivot  
Direktna gluma - Pivot



📖	DESCR.
R072601	0124
R072602	0330
R072603	0331
R072604	0121
-	-

Acțiune directă - Basculant  
Direct acting - Rocker  
Direktna gluma - Rocker



📖	DESCR.
R072701	6126
R072702	6128
R072703	0127
...	...
R072706	6106

Acțiune directă - Flipper  
Direct acting - Flipper  
Direktna gluma - Flipper



📖	DESCR.
R072801	6124
R072802	6144
R072803	6650
R072804	6604
-	-

Asistata servo - Diafragmă  
Servo-assisted - Plunger & diaphragm  
Servo-potpomognuto - klip i dijafragma



📖	DESCR.
R072901	5281
R072902	5282
R072903	6211
R072904	6227
R072905	6228

Asistata servo - Piston  
Servo-assisted - Piston  
Servo uz pomoć klipa



📖	DESCR.
R073001	0406
R073002	5404
R073003	6221
...	...
R073006	0344

Asistata servo - pilot diafragmă  
Servo-assisted - Isolated pilot & diaphragm  
Servo-potpomognuto izol. pilot i dijafragma



📖	DESCR.
R073101	5282
R073102	0142
R073103	6642
R073104	6212
-	-

Asistata servo - cuplaj diafragmă  
Servo-assisted - Spring coupled  
Servo-potpomognuto - spojeno s oprugom



📖	DESCR.
R073201	6213
-	-

Asistata servo - cuplaj piston  
Servo-assisted - Hard coupled  
Servo-potpomognuto - Tvrd spojeno



📖	DESCR.
R073301	6240
R073302	0290
R073303	0407
-	-

Cronocomandă  
Timer control  
Kontrola tajmera



📖	DESCR.
R073401	1078-1
R073402	1078-2
-	-

Control proportional  
Proportional control  
Proporcionalna kontrola



📖	DESCR.
R073501	8605
-	-

Oxygen  
Oxygen  
Kiseonik

G 1/8" - IP67  
P: 0,2... 7 bar



📖	DESCR.
E033010	24 VDC ∅∅
E033020	230 V ∅∅
E033030	24 VDC ∅∅
E033040	24 VDC ∅∅
-	-

## Valve mici / Small valves / Mali ventili

PVC lab / PVC lab  
PVC laboratorija



📖	Ø (mm)
R122353	1/4" x 1/4"
R122751	1/4" x 3/8"
-	-

PP-PE 2x bavură / PP-PE 2x hose barb  
PP-PE 2x zarezana



📖	Ø (mm)
R074001	4
R074002	5-7
R074003	7-9
R074004	9-11
R074005	11-13

PP-PE 3x bavură / PP-PE 3x hose barb  
PP-PE 3x zarezana



📖	Ø (mm)
-	-
R074102	5-7
R074103	7-9
R074104	9-11
R074105	11-13

PP-PE 2x bavură / PP-PE 2x hose barb  
PP-PE 2x zarezana



📖	Ø (mm)
R074201	12
R074202	16
R074203	20
R074204	25
-	-

PP-PE bavură. x vis. ♂ / PP-PE barb x thr. ♂  
PP-PE zar. x nav. ♂



📖	Ø (mm)
R074301	12 x 1/2"
R074302	12 x 3/4"
R074303	16 x 1/2"
...	...
R074308	25 x 3/4"

PP-PE bavură. x fil. ♀ / PP-PE barb x thr. ♀  
PP-PE zar. x nav. ♀



📖	Ø (mm)
R074401	16 x 1/2"
R074402	16 x 3/4"
R074403	20 x 1/2"
...	...
R074406	25 x 3/4"

PP-PE fil. ♂ x fil. ♂ / PP-PE thr. ♂ x thr. ♂  
PP-PE nav. ♂ x nav. ♂



📖	Ø (mm)
R074501	1/2"
R074502	3/4"
-	-

PP-PE fil. ♀ x fil. ♀ / PP-PE thr. ♀ x thr. ♀  
PP-PE nav. ♀ x nav. ♀



📖	Ø (mm)
R074601	1/2"
R074602	3/4"
-	-

PP-PE fil. ♂ x fil. ♀ / PP-PE thr. ♂ x thr. ♀  
PP-PE nav. ♂ x nav. ♀



📖	Ø (mm)
R074701	1/2"
R074702	3/4"
-	-



Alama - Aquarium / Brass - Aquarium  
Mesing - Akvarij



📖	Ø (mm)
R074801	4 × 4
R074802	4-5 × M5
R074803	4 × 4 × 4
-	-

Alama - Standard / Brass - Standard  
Mesing - Standard [⊕ : O<sub>2</sub>]



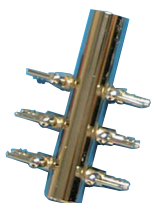
📖	Ø (mm)
R074901	1/8"
...	...
R074905	3/4"
R074921	1/8"
...	...
R074925	3/4"

Distribuator (plastic) / Distributor (plastic)  
Distributer (plastika)



📖	Ø (mm)
R075051	6x
R075052	8x
R075053	10x
...	...
R075056	20x

Distribuator LP / Manifold LP  
Distributer LP (Ø 4 mm)



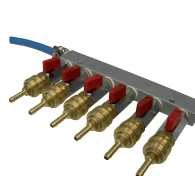
📖	DESCR.
R075101	2x
R075102	3x
R075103	4x
...	...
R075108	18x

Distribuator HP / Manifold HP  
Distributer HP (Ø 9 mm)



📖	DESCR.
R075201	2x
R075202	3x
R075203	4x
R075204	5x
-	-

Distribuator O<sub>2</sub> / O<sub>2</sub> Manifold  
Distributer O<sub>2</sub>



📖	Ø (mm)
R075301	2x
R075302	3x
R075303	4x
...	...
R075307	8x

Valve plutitoare / Float valves /  
Plutajući ventili

Alama / Brass  
Mesing



📖	Ø (mm)
R076001	3/8"
R076002	1/2"
R076003	3/4"
...	...
R076007	2"

Plastic quick-stop / Plastic quick-stop  
Plastični brzi graničnik



📖	Ø (mm)
R076100	1/2"
R076101	3/4"
R076102	1"
R076103	1" 1/2"
-	-

Plastic auto-lock / Plastic auto-lock  
Plastično automatsko zaključavanje



📖	Ø (mm)
R076201	1/2"
R076202	3/4"
R076203	1"
...	...
R076207	2" 1/2"

Supape de reținere & Filtre / Check valves & Strainers /  
Nepovratni ventili i filteri

S4 Clapă / S4 Wafer  
S4 Oblatna



📖	Ø (mm)
R270001	40
R270196	50
R270036	63
...	...
R270504	560

S4 Clapă cu arc / S4 Wafer with spring  
S4 Oblatna sa oprugom



📖	Ø (mm)
R270003	40
R270198	50
R270037	63
...	...
R270117	315

K4 Clapă, indicatorul / K4 Wafer, indicator  
K4 Oblatna, indikator



📖	Ø (mm)
R125804	75
R125805	90
R125806	110
...	...
R125809	280

K6 Clapă cu arc / K6 Wafer with spring  
K6 Oblatna sa oprugom



📖	Ø (mm)
R129078	50
R129079	63
R129080	75
...	...
R129086	315

S4 Con lip. ♀ / S4 Cone solv. ♀  
S4 konusno ljep. ♀



📖	Ø (mm)
R012501	16
R012502	20
R012503	25
...	...
R012510	110

S4 Con fil. ♀ / S4 Cone thr. ♀  
S4 konusno nav. ♀



📖	Ø
R121186	3/8"
R121188	1/2"
R121190	3/4"
...	...
R121202	3"

Clapă, orizontală / Wafer, horizontal  
Oblatna, horizontalna



📖	Ø (mm)
R077601	32
R077602	40
R077603	50
-	-

S4 Picior lip. ♀ / S4 Foot solv. ♀  
S4 Nožno ljep. ♀



📖	Ø (mm)
R121323	16
R121329	20
R121335	25
...	...
R122389	110

S4 Picior fil. ♀ / S4 Foot thr. ♀  
S4 Nožno nav. ♀



📖	Ø
R121321	3/8"
R121327	1/2"
R121333	3/4"
...	...
R121371	3"

⊕ con S4, de asemenea disponibil sub formă de fuziune PE / S4 cone also available as PE fusion / S4 konus dostupan i kao PE fuzija

Rețineră Y lip. ♀ / Y check valve solv. ♀  
Y nepovratni ventil ljeplj. ♀



📖	Ø (mm)
R077701	16
R077702	20
R077703	25
...	...
R077710	110

Rețineră Y fil. ♂ / Y check valve thr. ♂  
Y nepovratni ventil nav. ♂



📖	Ø
R077801	¾"
R077802	1"
R077803	1" ¼
R077804	1" ½
R077805	2"

S4 Aerare lip. ♀ / S4 Aerating solv. ♀  
S4 Aeracija ljeplj. ♀



📖	Ø (mm)
R121262	16
R121264	20
R121266	25
...	...
R122391	110

S4 Aerare fil. ♀  
S4 Aerating thr. ♀  
S4 Aeracija nav. ♀



📖	Ø
R121280	¾"
R121282	½"
R121284	¾"
...	...
R121296	3"

supapă de aer (sufianta)  
Air check valve (blower)  
Nepovratni ventil za vazduh (duvaljka)



📖	Ø
E009874	1"
E009875	1" ¼
E009876	1" ½
...	...
E009879	4"

Oțel inoxidabil & supapă de control PTFE  
Stainless steel & PTFE check valve  
Nerdajući čelik i PTFE nepovratni ventil



📖	Ø
R077101	¼"
R077102	¾"
R077103	½"
...	...
R077108	2"

Supapă de acvariu / Aquarium check valve  
Nepovratni ventil za akvarijum



📖	Ø (mm)
R077001	4
-	-

Filtru impurități oțel inox. / St. steel strainer  
Nehrdajući čelik cjedilo



📖	Ø
R077301	¾"
R077302	½"
R077303	¾"
...	...
R077310	4"

Filtru impurități PVC / PVC strainer  
PVC cjedilo



📖	Ø (mm)
R077501	20
R077502	25
R077503	32
...	...
R077509	110

🔗 Picior sita : cu sau fără supapă de verificare, toate materialele disponibile / Foot strainers : with or without check valve, all materials available  
za noge : sa ili bez nepovratnog ventila, svi materijali dostupni

## Filtre drepte / In-line filters / In-line filteri

S4 plastic lip. ♀ / S4 plastic solv. ♀  
S4 plastik. ljeplj. ♀



📖	Ø (mm)
R121701	16
R121702	20
R121703	25
...	...
R121710	110

S4 plastic fil. ♀ / S4 plastic thr. ♀  
S4 plastik. nav. ♀



📖	Ø (mm)
R121721	¾"
R121722	½"
R121723	¾"
...	...
R121758	3"

S4 metal lip. ♀ / S4 metal solv. ♀  
S4 metal. ljeplj. ♀



📖	Ø (mm)
R124707	16
R124708	20
R124709	25
...	...
R124716	110

S4 metal fil. ♀ / S4 metal thr. ♀  
S4 metal. nav. ♀



📖	Ø (mm)
R124717	¾"
R124718	½"
R124719	¾"
...	...
R124725	3"

Sită / Insert  
Umetak



📖	■ (mm)
R250606	0,50
...	...
R250614	0,75
...	...
R250622	1,00

Filtre Y / Y-filter  
Y-filter



📖	Ø (mm)
R078101	20
R078102	25
R078103	32
...	...
R078109	90

Filtre Y, curat / Y-filter, clear  
Y-filter, transparentan



📖	Ø (mm)
R078201	20
R078202	25
R078203	32
...	...
R078209	90

Sită, plastic / Insert, plastic  
Umetak, plastični



📖	■ (mm)
R078301	0,5
R078321	0,8
R078341	1,4
R078361	2,2
...	...

Sită, metal / Insert, metal  
Umetak, metal



(AISI 316 - ■ 0,5 mm)

📖	Ø (mm)
R078401	20
R078402	25
R078403	32
...	...
R078408	90

Mixere statice / Static mixers /  
Statički mikseri

☞ pagina 50 / page 50 / strana 50

Debitmetre cu plutitor / Variable area flowmeters /  
Merači protoka sa varijabilnom površinom

💡 Toate debitmetre M123, M335 și M350 sunt disponibile cu plutitor magnetic ca opțiune  
All flowmeters M123, M335 and M350 are available with magnetic float as an option  
Svi mjeraci protoka M123, M335 i M350 dostupni su sa magnetnim plovkom kao opcija

M123 PSU / M123 PSU  
M123 PSU



📖	Q (lph)
R273471	1,5-15
R273472	2,5-25
R273473	5-50
...	...
R273481	100-1000

M123 PVC / M123 PVC  
M123 PVC



📖	Q (lph)
R274161	1,5-15
R274162	2,5-25
R274218	5-50
...	...
R274171	100-1000

M335 PA / M335 PA  
M335 PA



📖	Q (lph)
R277084	50-500
R277085	100-1000
R277086	150-1500
...	...
R277096	8000-60000

M335 PSU / M335 PSU  
M335 PSU



📖	Q (lph)
R277162	50-500
R277163	100-1000
R277164	150-1500
...	...
R277174	8000-60000

M335 PVC / M335 PVC  
M335 PVC



📖	Q (lph)
R277240	50-500
R277241	100-1000
R277242	150-1500
...	...
R277252	8000-60000

M350 PA / M350 PA  
M350 PA



📖	Q (lph)
R279700	50-500
R279701	100-1000
R279709	150-1500
...	...
R279712	8000-60000

M350 PSU / M350 PSU  
M350 PSU



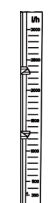
📖	Q (lph)
R279778	50-500
R279779	100-1000
R279780	150-1500
...	...
R279790	8000-60000

M350 PVC / M350 PVC  
M350 PVC



📖	Q (lph)
R279856	50-500
R279857	100-1000
R279858	150-1500
...	...
R279868	8000-60000

Scara speciala / Special scale  
Posebna skala



📖	Pair (bar)
R300201	0
R300202	1
R300203	2
...	...
R300204	8

Contact limita  
Limit contacts  
Ograničite kontakte



📖	DESCR.
R277287	min.
R277288	max.
-	-

Senzor masurare  
Measuring sensor  
Merni senzor



📖	DESCR.
R277463	4-20 mA
-	-

Debitmetre analiza  
Analysis flow tube meter  
Analiza protočne cijevi



📖	Q (lpm)
R079101	0,006
...	...
R079150	62,1
R079201	0,019
...	...
R079245	62,6

Intreupator senzor optic  
Optical sensor switch  
Prekidač optičkog senzora



📖	Ø (mm)
R079301	1× [65 mm]
R079302	1× [150 mm]
R079303	2× [150 mm]
-	-

Debitmetre multiplu  
Multiple flow tube meters  
Višestruki mjeraci protoka



📖	DESCR.
R079401	2×
R079402	3×
R079403	5×
R079404	5×
R079405	6×

Pitot  
Pitot  
Pitot



📖	Q (GPM)
R079601	5-35
R079602	9-50
R079603	10-70
...	...
R079609	300-2200

☞ Standard oxygen debitmetre pagina 48 / Standard oxygen flowmeters page 48 / Standardni mjeraci protoka kiseonika strana 48

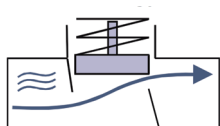
De asemenea, disponibile: Debitmetru cu cutie indicatoare (debit mare), Debitmetru țintă (orizontal), Aw-Lake (multi-poziție & bidirecțională)  
also available : flowmeters with indicator box (high flow), target flowmeters (horizontal), AW-Lake (multi-position & bi-directional)  
dostupni : mjeraci protoka sa indikatorskom kutijom (visok protok), ciljani mjeraci protoka (horizontalni), AW-Lake (višestruki i dvosmjerni)

**Întrepruătoare de debit & debitmetre / Flow switches & Flowmeters /  
Prekidači protoka & Mjerači protoka**

Supapă cu piston  
Piston valve design  
Dizajn klipnog ventila



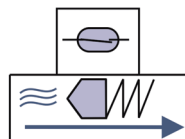
R080100



Supapă incorporat  
Piston inline design  
Klip inline dizajn



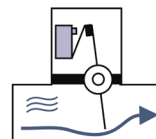
R080200



Comutator cu pedale  
Paddle - switch  
Veslo - prekidač



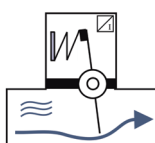
R080300



Pedal metru  
Paddle - meter  
Veslo - metar



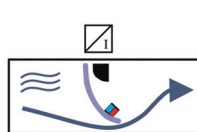
R080400



Clapa dinamic  
Dynamic flap  
Dinamički preklap



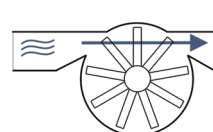
R080500



Rotor  
Rotor  
Rotor



R080600



Turbină  
Turbine  
Turbina



R080700



Șurub ax  
Spindle screw  
Vijak za vreteno



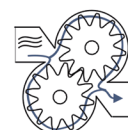
R080800



Roată dințată  
Gear wheel  
Zupčanik



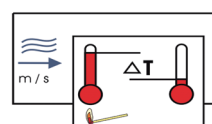
R080900



Calorimetric  
Calorimetric  
Kalorimetrijski



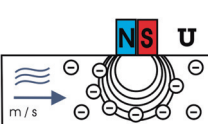
R081000



Inductiv magnetic  
Magnetic inductive  
Magnetna induktivna



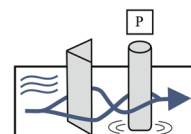
R081100



Vortex  
Vortex  
Vortex



R081200



Ultrasonic  
Ultrasonic  
Ultrazvuk



R081300



Sticlă  
Sight glass  
Vidno staklo



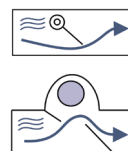
R081400



Rabatare & Sferă indicatori de curgere  
Flap & Sphere flow indicators  
Indikatori protoka flap & sfera



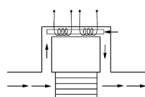
R081500



Debitmetru in masa  
Mass flowmeter  
Mjerač masenog protoka



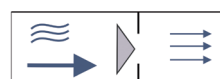
R081600



Limitator orificiu  
Orifice limiter  
Graničnik otvora



R081700



Dispozitiv portabil, curentmetru  
Hand-held device, current-meter  
Ručni uređaj, mjerač struje



R081800

curentmetru (hidro-  
logic) / current-meter  
(hydrology) / strujomjer  
(hidrologija)

p. 160



**Înterupătoare de nivel & senzori / Level switches & sensors /  
Prekidači nivoa & senzori**

Pară SKW PVC / Pear SKW PVC  
Kruška SKW PVC



	ⓘ (m)
R082501	3
R082502	5
R082503	10
R082504	20
-	-

Pară SSW NEO / Pear SSW NEO  
Kruška SSW NEO



	ⓘ (m)
R082602	5
R082603	10
-	-

Pară SSWE NEO / Pear SSWE NEO  
Kruška SSWE NEO



	ⓘ (m)
R082701	10
R082702	20
-	-

Comutator plutitor santină  
Bilge float switch  
Kaljužni plivajući prekidač



	⚡ (A)
R082801	15
-	-

Nivel comutator plutitor, vertical  
Level float switch, vertical  
Plovak nivoa, vertikalni



	ⓘ (mm)
R082901	40
R082902	250
R082903	500
R082904	750
R082905	1000

Nivel comutator plutitor, orizontal  
Level float switch, horizontal  
Plovak za nivo, horizontalan



	DESCR.
R083001	RWI
R083002	L25-L26
-	-

Comutator de nivel, în infraroșu  
Level switch, infrared  
Prekidač nivoa, infracrveni



	⚡
R083101	5V - T
R083102	24V - T
R083103	5V - N
R083104	24V - N
-	-

Comutator de nivel conductive  
Conductive level limit switch  
Konduktivni granični prekidač nivoa



	ⓘ (mm)
R083201	3× 150
R083202	3× 1000
-	-

Vibrații comutator de nivel  
Vibration level limit switch  
Granični prekidač nivoa vibracija



	DESCR.
R083301	V551
-	-

comutator de nivel capacitive  
Capacitive level limit switch  
Kapacitivni granični prekidač nivoa



	DESCR.
R083401	rev.
R083402	std.
-	-

Detector de scurgeri  
Guided wave radar level sensor  
Radarski senzor nivoa sa vođenim talasima



	DESCR.
R083590	IFM
-	-

Senzor de presiune hidrostatică  
Hydrostatic pressure sensor  
Senzor hidrostatskog pritiska



	ⓘ (m)
R083601	1,0
R083602	2,5
R083603	4,0
...	...
R083613	250

Senzor de ultrasunete  
Ultrasound sensor  
Ultrazvučni senzor



	Ø (mm)
R083701	LS20
R083702	EL
R083703	OMNI-L
-	-

Senzor de nivel plutire  
Float level sensor  
Senzor nivoa plovaka



	ⓘ (mm)
R083801	250
R083802	500
R083803	750
...	...
R083806	2000

ecartament conținutul hidrostatică  
Hydrostatic tank content gauge  
Hidrostatski mjerač sadržaja rezervoara



	DESCR.
R083901	☞
R083902	⚡
-	-

Senzor de nivel capacitate  
Capacitive level sensor  
Kapacitivni senzor nivoa



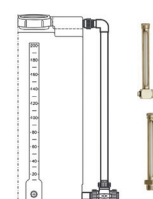
	ⓘ (mm)
R084001	500
R084002	800
R084003	1000
...	...
R084006	2500

Senzor de nivel calorimetric  
Calorimetric level sensor  
Kalorimetrijski senzor nivoa



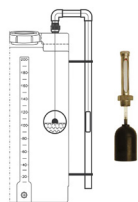
	ⓘ (mm)
R084101	100
R084102	150
R084103	200
-	-

Vedere din sticlă, fără a plutire  
Sight glass without float  
Vidno staklo bez plovka



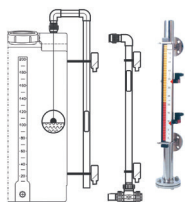
	DESCR.
R084201	NO
R084202	NA
R084203	NB
-	-

vedere din sticlă, fără cu plutitor  
Sight glass with float  
Vidno staklo sa plovkom



	Ø (mm)
R084301	N0S
R084302	NBS
-	-

Opțiune comutator magnetic  
Sight glass magnetic switch option  
Opc. magnetnog prekidača za vidno staklo



	Ø (mm)
R084401	N0SC
R084402	NR-000
-	-

Indicator nivel vizual  
Visual level indicator  
Vizuelni indikator nivoa



	Ø (mm)
R084501	norm. ●
R084502	norm. ●
-	-

### Rezervoare sub presiune / Pressure tanks / Rezervoari pod pritiskom

Wellmate / Wellmate  
Wellmate



	Vol. (l)
R085501	60
R085502	75
R085503	120
...	...
R085511	1000

GWS / GWS  
GWS



	Vol. (l)
R085601	100
R085602	200
R085603	300
R085604	350
R085605	450

Aquasystem / Aquasystem  
Aquasystem



	Vol. (l)
R085701	50
R085702	80
R085703	100
...	...
R085710	2000

### Manometre, Presostate si senzori / Manometers, Pressure gauges, Pressure switches & sensors / Manometri, Manometri, Prekidači & senzori pritiska

Aliaj de cupru, uscat / Copper alloy, dry  
Legura bakra, suva



	P (bar)
R086101	0,6
R086102	1,0
R086103	1,6
...	...
R086116	400

Oțel inox., glicerină / St. steel, glycerine  
nerđajući čelik, glicerín



	P (bar)
R086201	0,6
R086202	1,0
R086203	1,6
...	...
R086216	400

Oxygen / Oxygen  
Kiseonik



	P (bar)
R086310	0,6
R086311	1,0

Presiune scăzută / Low pressure  
Nizak pritisk



	P (mbar)
R086401	25
R086402	40
R086403	60
...	...
R086408	600

Diferential / Differential  
Diferencijal



	P (bar)
R086501	0,06
R086502	1,0
R086503	1,6
...	...
R086517	100

Opț. comutator / Switch contact option  
Opcija za promjenu kontakta



	Type / Tipo
R086601	magn. 1
...	...
R086606	magn. 6
R086611	ind. 1
...	...

Separator / Separator  
Separator



	mat.
R086701	PVC
R086702	PP
R086703	PVDF
-	-

Comutator de presiune / Pressure switch  
Prekidač pritiska



	P (bar)
R086801	0,35 [1x]
R086802	0,35 [2x]
R086803	1,0 [1x]
...	...
R086822	500 [2x]

Transmițător / Transmitter  
Predajnik



	P (bar)
R086901	0,10
R086902	0,16
R086903	0,25
...	...
R086920	600

Sonda senzor hidrostatic  
Well probe hydrostatic sensor  
Senzor bušotine



	P (bar)
R083601	0,10
R083602	0,25
R083603	0,40
...	...
R083613	25

Afișaj presiune, stationary  
Pressure display, stationary  
Prikaz pritiska, stacionarni



	P (bar)
R087001	OMNI-P
R087002	GIA2000
-	-

Afișaj presiune, dispozitiv portabil  
Pressure display, hand-held device  
Prikaz pritiska, ručni uređaj



	DESCR.
R087101	GMH3111
R087102	GMH3151
R087103	GMH3156
...	...
R087113	GMH3181

**Unelte de decupare de țevă & Asamblare / Pipe cutter & Assembly /  
Rezač & Montaža cijevi**

Sărmă / Wire  
Žica



	Ø (mm)
R015611	140 (24")
R015612	500 (72")
-	-

Ferestreau / Saw  
Vidio



	→ (mm)
R015621	300
R015622	400
-	-

Foarfece / Shear  
Smicanje



	Ø (mm)
R015631	26
R015632	40
R015633	63
-	-

Tăietor / Cutter  
Rezač



	Ø (mm)
R015600	3 ... 33
R015601	6 ... 63
R015604	10 ... 90
...	...
R015606	150 ... 254

Ghilotină / Guillotine  
Giljotina



	Ø (mm)
R015641	125
R015642	225
R015643	350
-	-

Segment / Segment  
Segment



	Ø (mm)
R015661	160 ... 315
R015662	355 ... 500
R015663	355 ... 630
R015664	355 ... 800
-	-

Cheie curea / Strap wrench  
Ključ za trake



	Ø (mm)
R015711	10 ... 63
R015712	33 ... 127
R015713	60 ... 324
-	-

Con debavurare / Deburring cone  
Konus za skidanje ivica



	Ø (mm)
R015721	20 ... 40
R015722	20 ... 63
-	-

Beveler / Beveler  
Beveler



	Ø (mm)
R015731	50 ... 200
R015732	40 ... 300
-	-

Instrument de debavurare / Deburring tool  
Alat za skidanje ivica



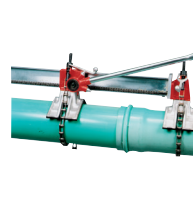
	DESCR.
R015741	4x
-	-

Mengină / Vise  
Vise



	Ø (mm)
R015751	10 ... 75
R015752	10 ... 114
R015753	10 ... 141
...	...
R015757	50 ... 500

Tâmplar / Joiner  
Asembler



	Ø (mm)
R015771	114 ... 434
-	-

**Fuziune, Sudare, Inspecție & Curățare / Fusion, Welding, Inspection & Cleaning /  
Fuzija, Zavarivanje, Inspekcija & Čišćenje**

Controler de electrofuziune  
Electrofusion controller  
Regulator za elektrofuziju



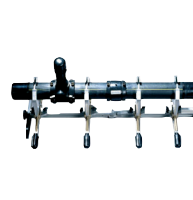
	DESCR.
R015801	Monomatic
R015802	Polymatic
-	-

Screper țevă  
Pipe scraper  
Strugač za cijevi



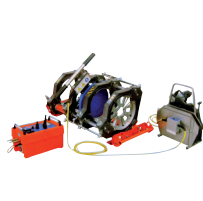
	Ø (mm)
R015811	63
R015821	50 ... 160
R015822	75 ... 315
R015823	355 ... 710
-	-

Aligner țevă și dispozitiv de prindere  
Pipe aligner and clamping tool  
za poravnavanje cijevi i alat za stezanje



	Ø (mm)
R015801	20 ... 63
R015802	63 ... 160
R015803	32 ... 110
...	...
R015806	250 ... 630

Mașină de cap la cap-fuziune  
Butt-fusion machine  
Mašina za spajanje sučelja



	Ø (mm)
R015901	63 ... 140
R015902	90 ... 280
-	-

Extrudare sudor  
Extrusion welder  
Ekstruzioni zavarivač



	DESCR.
R016001	RSB20
-	-

Nettoyeur de tuyau & Camera  
Pipe cleaning machine & Camera  
Mašina za čišćenje cijevi i kamera



	DESCR.
R016080	♣
R016090	♣
-	-

### Lipici / Glue / Ljepilo

Lipici / Glue  
Ljepilo



📖	Vol. (ml)
R014700	100
R014701	250
R014751	500
R014801	1000
R014821	5000

Mai curat / Cleaner  
Čistač



📖	Vol. (ml)
R014951	500
R015001	1000
R015021	5000
-	-

Lubrifiant / Lubricant  
Lubrikant



📖	Υ (g)
R015101	700
-	-

Lipici ABS Air-Line / ABS Air-Line adhesive  
ABS Air-Line ljepilo



📖	Vol. (mL)
R014851	500
-	-

Teflon / Teflon  
Teflon



📖	↗ (mm)
R014601	12
R014602	15
R014603	19
-	-

Sigila / Sealing  
Zaptivanje



📖	DESCR.
R014651	577
R014652	5331
-	-

### Clipuri / Clips / Klipovi

Tip A / Type A  
Tip A



📖	Ø (mm)
R015401	16
R015402	20
R015403	25
R015404	32
-	-

Tip B / Type B  
Tip B



📖	Ø (mm)
R015411	16-19
R015412	20-23
R015413	25-28
...	...
R015419	87-95

Tip Cobra / Type Cobra  
Tip Cobra



📖	Ø (mm)
R015351	16
R015352	20
R015353	25
...	...
R0153263	160

Tip D / Type D  
Tip D



📖	Ø (mm)
R015351	90
R015352	110
R015353	125
...	...
R015362	400

Tip E / Type E  
Tip E



📖	Ø (mm)
R015431	40
R015432	50
R015433	63
...	...
R015439	160

Distanțier (E & D) / Spacer (E & D)  
Odstojnik (E & D)



📖	Ø (mm)
R015460	32
...	...
R015463	63
R015481	16
...	...
R015483	160

### Inele de prindere / Clamping rings / Stezni prstenovi

Clemă unică bossed  
Single bossed clamp  
Stezaljka sa jednim nabokom



📖	Ø (mm)
R411001	13-18
R411002	20-23
R411003	25-28
...	...
R411018	160-169

Amortizată bossed clemă  
Damped bossed clamp  
Prigušena obujmica



📖	Ø (mm)
R411101	15-20
R411102	21-26
R411103	26-32
...	...
R411120	164-169

Șurub bolt  
Bolt screw  
Mješoviti vijak/šraf



📖	dim.
R411201	M8 × 50
R411202	M8 × 60
R411203	M8 × 80
...	...
R411215	M12 × 80

Tijă filetată / Threaded rod  
Navojna šipka



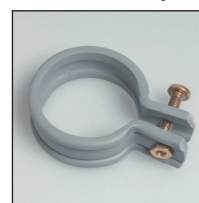
📖	dim.
R402801	M8 × 25
R402802	M8 × 30
R402803	M8 × 40
...	...
R402836	M16 × 2000

Clemă cu inserție / Hose clamp with insert  
Obujmica za crijevo sa umetkom



📖	Ø (mm)
R412001	6
R412002	8
R412003	10
...	...
R412012	45

Clemă de plastic / Plastic clamp  
Plastična stezaljka



📖	Ø (mm)
R412101	32
R412102	40
R412103	50
...	...
R412111	160



Brida oțel inox. / Stirrup st. steel  
Stremen st. čelika



📖	Ø (mm)
R412201	75
R412202	90
R412203	110
...	...
R412209	250

Brida PVC / Stirrup PVC  
Uzengija PVC



📖	Ø (mm)
R412301	32
R412302	40
R412303	50
...	...
R412310	110

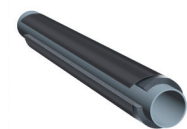
Benzi de cablu / Cable strip  
Kabelska traka



📖	↗ (mm)
R015501	96 x 2,5
R015502	165 x 2,5
R015503	203 x 2,5
...	...
R015521	730 x 12,7

## Izolație termică / Thermal insulation / Toplotna izolacija

K-Flex AL-CLAD / K-Flex AL-CLAD  
K-Flex AL-CLAD



📖	↔ x Ø (mm)
R410101	13 x 15
R410102	13 x 18
R410103	13 x 22
...	...
R410140	32 x 160

K-Flex EC / K-Flex EC  
K-Flex EC



📖	↔ x Ø (mm)
R410201	9 x 6
R410202	9 x 8
R410203	9 x 10
...	...
R410308	32 x 170

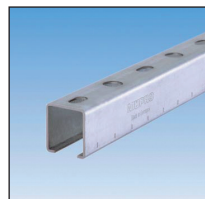
K-Flex STC / K-Flex STC  
K-Flex STC



📖	↔ x Ø (mm)
R410401	13 x 42
R410402	13 x 48
R410403	13 x 54
...	...
R410426	19 x 160

## Șine MPC / MPC rails / MPC șine

Șine / Support channel  
Kanal podrške



📖	dim. (mm)
R400101	27/18 (A)
R400102	28/30 (B)
R400103	38/40 (C)
R400104	40/60 (D)
-	-

Suport perete cuier / Wall hanger bracket  
Nosăc za zidnu vješalicu



📖	→ (mm)
R400201	200 (A)
R400202	300 (A)
R400203	160 (B)
...	...
R400210	560 (D)

Biela diagonal / Diagonal strut  
Dijagonalni podupirač



📖	→ (mm)
R400301	440
-	-

Suport de perete cuier fantă laterală  
Wall hanger bracket lateral slot  
Bočni utor za zidnu vješalicu



📖	→ (mm)
R400401	600 (A)
R400402	400 (B)
R400403	240 (C)
R400404	480 (C)
-	-

Filet exterior de fixare rapidă  
Quick fastener external thread  
Brzi pričvršćivač vanjski navoj



📖	dim. (mm)
R400501	M8 x 7
R400502	M8 x 25
R400503	M8 x 45
...	...
R400511	M10 x 50

Filet interior fasterner rapidă  
Quick fastener internal thread  
Brzi zatvarač unutrašnji navoj



📖	dim.
R400601	M8 (A/B)
R400602	M10 (A/B)
R400603	M8 (C/D)
R400604	M10 (C/D)

Cap ciocan / Hammer-head  
Glava čekića



📖	dim.
R400701	M8 x 7
R400702	M8 x 15
R400703	M8 x 25
...	...
R400715	M12 x 15

Șurub cap ciocan / Hammer-head bolt  
Vijak sa glavom čekića



📖	dim.
R400801	M8 (C/D)
R400802	M10 (C/D)
R400803	M12 (C/D)
-	-

Piuliță feroviară / Rail nut  
Șinska matica



📖	dim.
R400901	M8 (A/B)
R400902	M8 (C/D)
R400903	M10 (C/D)
R400904	M12 (C/D)
-	-

Suport de prindere / Clamp bracket  
Stezaljka



📖	dim.
R401001	M8 (A/B)
R401002	M10 (A/B)
R401003	M8 (C)
...	...
R401008	M12 (D)

Capac de protecție / Protection cap  
Zaštitna kapa

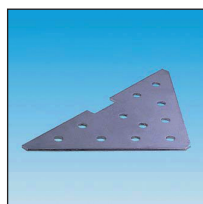


📖	dim.
R401101	A
R401102	B
R401103	C
R401104	D
-	-

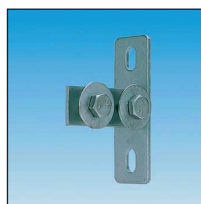
Conector canal / Channel connector  
Kanal konektor



📖	dim.
R401201	A/B
R401202	C/D
-	-

**Unghiul de armare / Reinforcement angle**  
**Ugao armature**


📖	dim.
R401301	C
-	-

**Suport sprijin / Channel support bracket**  
**Nosač kanala**


📖	DESCR.
R401401	T (A/B)
R401402	T (C/D)
R401403	L (A/B)
R401404	L (C/D)
-	-

**Suport șa / Saddle support**  
**Podrška za sedlo**


📖	DESCR.
R401501	T (A/B)
R401502	T (C/D)
R401503	L (A/B)
R401504	L (C/D)
-	-

**Suport șa Vario / Vario saddle support**  
**Vario nosač sedla**


📖	dim.
R401601	C/D
-	-

**Unghi montare din / Mounting angle**  
**Montažni ugao**


📖	▲
R401701	45° (A/B)
R401702	90° (A/B)
R401703	45° (C/D)
R401704	90° (C/D)
-	-

**Conector transv. / Cross channel connector**  
**Cross-channel konektor**

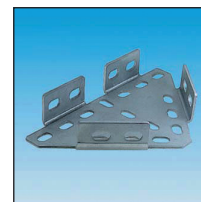

📖	dim.
R401801	B
R401802	C
R401803	D
-	-

**Girder țăruș / Girder cleat**  
**Nosač nosača**


📖	dim.
R401901	M6 (A/B)
R401902	M10 (C/D)
-	-

**Suport cantilever / Cantilever bracket**  
**Konzolni nosač**


📖	dim. (mm)
R402001	200 × 4
-	-

**Suport constructii / Construction bracket**  
**Konstruktivski nosač**


📖	dim. (mm)
R402101	280 × 164
-	-

**Unghiul scurt / Short mounting angle**  
**Kratok ugao montaže**


📖	dim.
R402201	C/D
-	-

**Placă de conectare / Connection plate**  
**Priključna ploča**


📖	DESCR.
R402301	L (C/D)
R402302	T (C/D)
-	-

**Unghiul lateral / Lateral angle**  
**Bočni ugao**


📖	DESCR.
R402401	↗ (C/D)
R402402	↖ (C/D)
R402403	↔ (C/D)
-	-

**Balama / Hinge**  
**Šarka**


📖	DESCR.
R402501	Vario
-	-

**Amortizor / Resilient pad**  
**Otporna podloga**


📖	Ø (mm)
R402601	43 (M8-M10)
-	-

**Mașină de spălat / Washer**  
**Perilica**


📖	Ø
R402701	M8/30
R402702	M10/35
-	-

**Tijă filetată / Threaded rod**  
**Navojna šipka**


📖	dim.
R402801	M8 × 25
R402802	M8 × 30
R402803	M8 × 40
...	...
R402836	M16 × 2000

**Conector rotund / Round connector**  
**Okrugli konektor**


📖	dim.
R402901	M8 × 30
R402902	M8 × 40
R402903	M10 × 30
...	...
R402906	M16 × 40

**Set de șuruburi / Screw set**  
**Set vijaka**


📖	dim.
R403001	M8 × 20
R403002	M8 × 25
R403003	M8 × 30
...	...
R403027	M24 × 60

**Conectori 3D / 3D connectors /  
3D konektori**

Cot / Elbow  
Lakat



	dim. (mm)
R017803	30 × 30 × 2
<i>std. : galv.</i>	
<i>opt. : AISI304</i>	
<i>opt. : M8/M10</i>	

Cot cu descărcare / Elbow with discharge  
Lakat sa granom



	dim. (mm)
R017804	30 × 30 × 2
<i>std. : galv.</i>	
<i>opt. : AISI304</i>	
<i>opt. : M8/M10</i>	

Teu / T-piece  
T-komad



	dim. (mm)
R017805	30 × 30 × 2
<i>std. : galv.</i>	
<i>opt. : AISI304</i>	
<i>opt. : M8/M10</i>	

Teu cu descărcare / T-piece with discharge  
T-komad sa granom



	dim. (mm)
R017806	30 × 30 × 2
<i>std. : galv.</i>	
<i>opt. : AISI304</i>	
<i>opt. : M8/M10</i>	

Cruce / Cross  
Križ



	dim. (mm)
R017807	30 × 30 × 2
<i>std. : galv.</i>	
<i>opt. : AISI304</i>	
<i>opt. : M8/M10</i>	

Cruce cu descărcare / Cross with discharge  
Križ sa granom



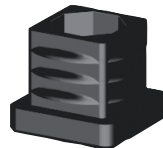
	dim. (mm)
R017808	30 × 30 × 2
<i>std. : galv.</i>	
<i>opt. : AISI304</i>	
<i>opt. : M8/M10</i>	

Stea / Star  
Zvijezda



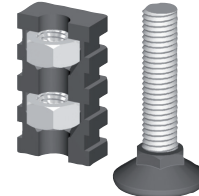
	dim. (mm)
R017809	30 × 30 × 2
<i>std. : galv.</i>	
<i>opt. : AISI304</i>	
<i>opt. : M8/M10</i>	

Dop / Plug  
Kapa



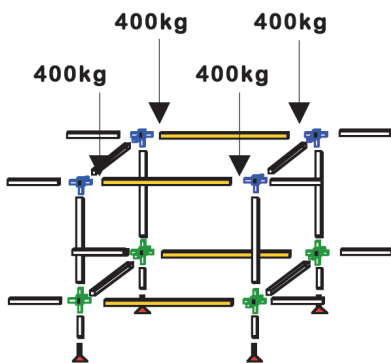
	dim. (mm)
R017810	30 × 30 × 2
<i>std. : galv.</i>	
<i>opt. : AISI304</i>	
<i>opt. : M8/M10</i>	

Picior / Leg  
Noga



	dim. (mm)
R017811	30 × 30 × 2
<i>std. : galv.</i>	
<i>opt. : AISI304</i>	
<i>opt. : M8/M10</i>	

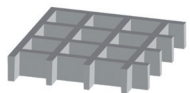
R017801 : țevă de aluminiu pătrat 30 × 30 × 2 mm / Square aluminium pipe 30 × 30 × 2 mm / Aluminijska kvadratna cijev 30 × 30 × 2 mm





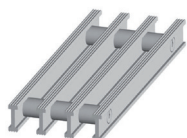
**Trotuare & anti-alunecare suprafețe / Walkways & Anti-slip surfaces /  
Staze i površine protiv klizanja**

Răzuirea standard / Moulded grating  
Oblikovana rešetka



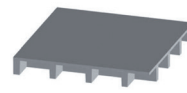
	↑ × (mm)
R404001	15 × 42
R404002	25 × 30
R404003	25 × 13
...	...
R404014	60 × 26

Răzuirea profil / Profile grating  
Profilna rešetka



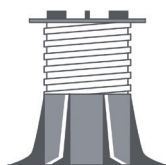
	↑ × (mm)
R404101	30 × 14
R404102	30 × 20
R404103	30 × 30
...	...
R404106	60 × 30

Pardoseli de siguranță / Safety flooring  
Sigurnosni podovi



	↑ × (mm)
R404201	18 × 30
R404202	28 × 30
R404203	33 × 30
R404204	41 × 30
R404205	53 × 42

Picioare din material plastic / Plastic feet  
Plastične noge



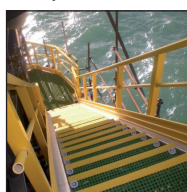
	↑ (mm)
R404301	32-50
R404302	50-75
R404303	75-120
...	...
R40408	300-400

Seturi de fixare / Fixing sets  
Setovi za pričvršćivanje



	DESCR.
R404401	TL
R404402	KU
R404403	DK
R404404	MK
-	-

Sisteme complete / Complete systems  
Kompletni sistemi



	DESCR.
R404501	ⓘ
-	-

3M Safety-Walk B2  
(Universal)



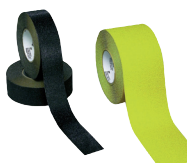
	→ (mm)
R404601	25 ●
R404602	50 ●●
R404604	100 ●●
...	...
R404609	914 ●

3M Safety-Walk Coarse  
(Extra)



	→ (mm)
R404701	150 ●
R404702	610 ●
R404703	914 ●
-	-

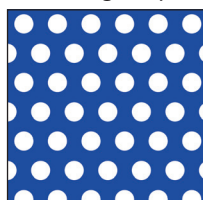
3M Safety-Walk Comfortable  
(Flexible)



	→ (mm)
R404801	50 ●
R404802	100 ●
R404803	150 ●
-	-

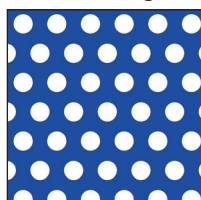
**Foi perforate / Perforated sheets /  
Perforirani listovi**

Alu., găuri rotunde / Alu., round holes  
Alu., okrugle rupe



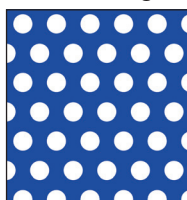
	■ (mm)
R018099	RT 0,6 - 1,25
R018100	RT 1,0 - 2,0
R018101	RT 1,5 - 2,5
...	...
R018145	RT 30 - 40

AISI 304, găuri rot. / AISI 304, round holes  
AISI 304, okrugle rupe



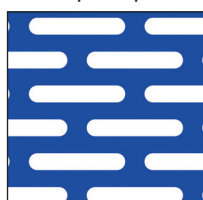
	■ (mm)
R018001	RT 0,6 - 1,25
R018002	RT 0,75 - 1,5
R018003	RT 1,0 - 2,0
...	...
R018077	RT 20 - 30

AISI 316, găuri rot. / AISI 316, round holes  
AISI 316, okrugle rupe



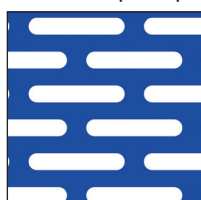
	■ (mm)
R018151	RT 1,25 - 2,5
R018152	RT 2,0 - 3,0
R018163	RT 2,0 - 3,5
...	...
R018173	RT 10 - 15

Alu., găuri ovalizate / Alu., slotted holes  
Alu., rupe sa prorezima



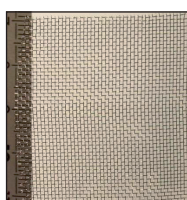
	■ (mm)
R018301	2 × 20
R018302	3 × 20
R018303	5 × 20
R018304	5 × 25
-	-

AISI 304, găuri oval. / AISI 304, slotted holes  
AISI 304, rupe sa prorezima



	■ (mm)
R018201	5 × 20
-	-

Pânză de sârmă / Wire cloth  
Žičana tkanina



☞ p. 100 (M110000)
grile speciale / special grids / posebne rešetke
☞ p. 84

**Garnitura de cauciuc / Rubber seal /  
Gumena brtva**

pătrat / square  
kvadrat



	→ × ↑ (mm)
R018401	2 × 10
R018402	2 × 20
R018403	3 × 10
...	...
R018411	10 × 50

pătrat, adeziv / square, adhesive  
kvadrat, ljepilo



	→ × ↑ (mm)
R018503	2 × 10
R018504	2 × 20
R018507	3 × 10
...	...
R018511	10 × 50

rundă / round  
round



	Ø (mm)
R018701	2
R018702	3
R018703	4
...	...
R018713	50



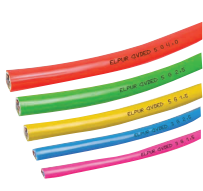
**Mufă de protecție a motorului & Cabluri electrice / Motor protection plug & Electric cable /  
Zaštitni utikač motora & Električni kabel**

VSL / VSL  
VSL



📖	Ø (mm <sup>2</sup> )
R405501	2x 0,75
-	-

PUR / PUR  
PUR



📖	Ø (mm <sup>2</sup> )
R405601	2x 0,75
R405602	2x 1,0
R405603	3x 1,0
R405604	2x 1,5
R405605	3x 1,5

NYM / NYM  
NYM



📖	Ø (mm <sup>2</sup> )
R405701	3x 1,5
R405702	5x 1,5
R405703	3x 2,5
R405704	5x 2,5
-	-

H05RR-F / H05RR-F  
H05RR-F



📖	Ø (mm <sup>2</sup> )
R405801	2x 1,0
R405802	3x 1,0
R405803	2x 1,5
...	...
R405807	5x 2,5

H07RN-F / H07RN-F  
H07RN-F



📖	Vol. (l)
E009198	2x 1,0
E009199	3x 1,0
E009200	2x 1,5
...	...
E009501	5x 2,5

Conector IP65 / Connector IP65  
Konektor IP65



📖	Ø (mm)
D014610	3 ... 10
-	-

Prize Schuko  
Schuko plugs  
Schuko utikači



📖	DESCR.
R406001	♂
R406002	♀
-	-

Prize CEE  
CEE plugs  
CEE utikači



📖	Ø (mm)
R406101	♂
R406102	♀
-	-

Mufă de protecție a motorului 230 V  
Motor protection plug 230 V  
Zaštitni utikač motora 230 V



📖	I (A)
E007600	1,0
E007700	1,5
E007701	2,0
...	...
E007710	16,0

Mufă de protecție a motorului 400 V  
Motor protection plug 400 V  
Zaštitni utikač motora 400 V



📖	I (A)
E007800	0,6 - 1,0
E007900	1,0 - 1,6
E008000	1,6 - 2,5
...	...
E008400	10,0 - 16,0

Mufă de protecție 400 V, verificarea fazei  
Motor protection plug 400 V, phase check  
Zaštitni utikač motora 400 V, provjera faze



📖	I (A)
E008500	0,6 - 1,0
E008600	1,0 - 1,6
E008700	1,6 - 2,5
...	...
E009100	10,0 - 16,0

Protecție 400 V, fără conector  
Motor protection plug 400 V, w/o connector  
Zaštitni utikač motora 400 V, bez konektora



📖	I (A)
E009130	0,6 - 1,0
E009140	1,0 - 1,6
E009150	1,6 - 2,5
...	...
E009190	10,0 - 16,0

alte echipamente electrice disponibile la cerere / other electric equipment available on request /  
ostala električna oprema dostupna na zahtjev



hidraulica, electrica si scule la cerere / hydraulics, electrics and tools on request / hidraulika, elektrika i alati na upit :

ACE

airtec

AVENTICS

BOSCH  
powered for life

CEJN

CE

Continental  
Gates

EMERSON

FAG

FESTO

fischer  
MOTORREACT

GARDENA

GEDORE

Henkel

HYDAC

IDEAL

KNIPEX

LOCTITE

NORGREN

NORMA

OKS

Parker

>Power Team

Rexroth  
Bosch Group

SKF

SMC

tesa

WIKAI